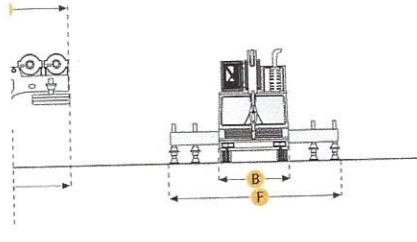
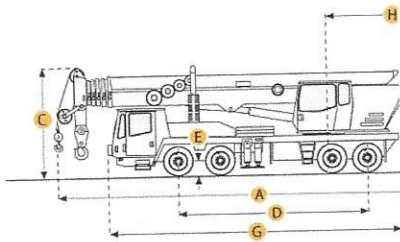


GROVE TMS300 HYDRAULIC TRUCK CRANE

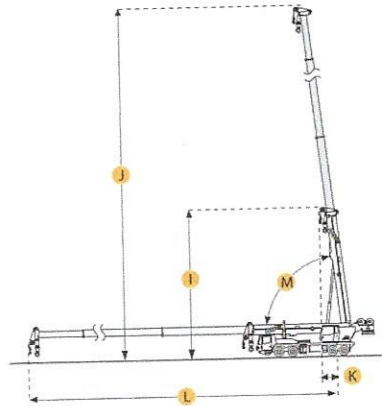


Boom

I. MIN HEIGHT @ MAX RAISE ANGLE	33 ft in	10.1 m
J. MAX HEIGHT @ MAX RAISE ANGLE - NO JIB	112 ft in	34.1 m
M. MAX ELEVATING ANGLE	80 degrees	

Dimensions

A. TRANSPORT LENGTH	41 ft in	12497 mm
B. TRANSPORT WIDTH	8 ft in	2438 mm
C. TRANSPORT HEIGHT	10.7 ft in	3264 mm
E. GROUND CLEARANCE	0.75 ft in	229 mm
F. WIDTH W/ OUTRIGGERS EXTENDED	18 ft in	5486 mm
G. CARRIER LENGTH	35.2 ft in	10719 mm
H. UPPER STRUCTURE TAIL SWING RADIUS	10.5 ft in	3188 mm



GROVE TMS300 HYDRAULIC TRUCK CRANE

Specification

UPPER STRUCTURE ENGINE		
MAKE		
CARRIER ENGINE		
MAKE	G.M.	
MODEL	6-71N	
NET POWER	203 hp	151.4 kw
POWER MEASURED @	2100 rpm	
MAX TORQUE	551 lb ft	747.1 Nm
TORQUE MEASURED @	1600 rpm	
DISPLACEMENT	426 cu in	7 L
Operational		
OPERATING WEIGHT	59876 lb	27159.3 kg
NUMBER OF AXELS	4	
CARRIER FUEL CAPACITY	90 gal	340.7 L
UPPER STRUCTURE HYDRAULIC SYSTEM FLUID CAPACITY	127 gal	480.7 L
OPERATING VOLTAGE	24 V	
ALTERNATOR SUPPLIED AMPERAGE	90 amps	
TIRE SIZE	front 12.00x20-16PR rear 11.00x20-14PR	
Transmission		
TYPE	Fuller Roadranger RTO613	
NUMBER OF FORWARD GEARS	13	
NUMBER OF REVERSE GEARS	3	
MAX SPEED - FORWARD	52.6 mph	84.7 km/h
Boom		
NUMBER OF SECTIONS	3	
MIN HEIGHT @ MAX RAISE ANGLE	33 ft in	10.1 m
MAX HEIGHT @ MAX RAISE ANGLE - NO JIB	112 ft in	34.1 m
MAX ELEVATING ANGLE	80 degrees	
MAX LIFT CAPACITY	66138.7 lb	30000 kg
SWING SPEED	2.6 rpm	
Dimensions		
TRANSPORT LENGTH	41 ft in	12497 mm
TRANSPORT WIDTH	8 ft in	2438 mm
TRANSPORT HEIGHT	10.7 ft in	3264 mm
GROUND CLEARANCE	0.75 ft in	229 mm
WIDTH W/ OUTRIGGERS EXTENDED	18 ft in	5486 mm
CARRIER LENGTH	35.2 ft in	10719 mm
UPPER STRUCTURE TAIL SWING RADIUS	10.5 ft in	3188 mm

