

HC-238B lifting crane capacities — open throat boom

Refer to Notes page 4.

Boom						Capacities ①											
Length	Radius		Angle	Boom point height ②		"A" upper and "A" bumper counterweights								"AB" upper and "A" bumper counterweights			
						On outriggers ③				On tires (static)				On outriggers only ③			
					Over rear		Over side & 360° swing ③		Over rear		Over side		Over rear		Over side & 360° swing ③		
	Ft.	m	Deg.	Ft.	m	Lbs.	kgs	Lbs.	kgs	Lbs.	kgs	Lbs.	kgs	Lbs.	kgs	Lbs.	kgs
50' ④ (15.24 m)	12	3.66	80.2	55' 11"	17.05	273.1*	123 9*	273.1*	123 9*	Not applicable	280.0*	127 0*	280.0*	127 0*			
	13	3.96	79.0	55' 9"	16.99	253.4*	114 9*	253.4*	114 9*		272.6*	123 7*	273.0*	123 8*			
	14	4.27	77.9	55' 7"	16.93	236.2*	107 1*	236.2*	107 1*		259.8*	117 8*	260.2*	118 0*			
	15	4.57	76.7	55' 4"	16.86	219.5*	99 6*	219.5*	99 6*		244.9*	111 1*	244.9*	111 1*			
	20	6.10	70.7	53' 10"	16.42	156.2*	70 9*	156.2*	70 9*		183.0*	83 0*	183.0*	83 0*			
	25	7.62	64.5	51' 10"	15.79	120.4*	54 6*	120.4*	54 6*		141.5*	64 2*	141.5*	64 2*			
	30	9.14	58.0	49' 1"	14.96	97.4*	44 2*	92.4	41 9		114.7*	52 0*	114.7*	52 0*			
	35	10.67	50.9	45' 6"	13.87	81.4*	36 9*	71.7	32 5		94.5*	42 9*	94.5*	42 9*			
	40	12.19	43.1	40' 10"	12.45	68.0	30 8	58.1	26 4		79.8*	36 2*	79.8*	36 2*			
	50	15.24	21.6	25' 1"	7.63	49.1	22 3	41.1	18 6		58.0*	26 3*	57.6	26 1			
70' (21.34 m)	15	4.57	80.5	75' 9"	23.08	181.3*	82 2*	181.3*	82 2*	83.6*	37 9*	64.6*	29 3*	181.3*	82 2*	181.3*	82 2*
	20	6.10	76.4	74' 8"	22.77	156.7*	71 1*	156.3*	70 9*	72.2*	32 7*	49.9*	22 6*	164.0*	74 4*	164.0*	74 4*
	25	7.62	72.1	73' 3"	22.34	120.9*	54 8*	120.9*	54 8*	61.8	28 0	40.0*	18 1*	130.0*	59 0*	130.0*	59 0*
	30	9.14	67.8	71' 5"	21.78	97.9*	44 4*	93.6	42 5	48.8	22 1	33.0*	15 0*	104.0*	47 2*	104.0*	47 2*
	35	10.67	63.3	69' 2"	21.09	81.9*	37 1*	72.7	33 0	39.9	18 1	27.9*	12 7*	86.5*	39 2*	86.5*	39 2*
	40	12.19	58.6	66' 5"	20.24	68.8	31 2	58.9	26 7	33.4	15 1	23.8*	10 8*	72.7*	33 0*	72.7*	33 0*
	50	15.24	48.4	59' 0"	17.98	49.9	22 6	42.0	19 0	24.7	11 2	17.1	7 8	55.1*	25 0*	55.1*	25 0*
	60	18.29	36.2	48' 0"	14.63	38.4	17 4	31.9	14 5	19.0	8 6	12.6	5 7	42.5*	19 3*	42.5*	19 3*
70	21.34	18.2	28' 6"	8.69	30.7	13 9	25.2	11 4	14.9	6 8	9.5	4 3	33.1*	15 0*	33.1*	15 0*	
90' (27.43 m)	20	6.10	79.4	95' 2"	29.00	144.5*	65 5*	144.5*	65 5*	72.6*	32 9*	50.7*	23 0*	144.5*	65 5*	144.5*	65 5*
	25	7.62	76.2	94' 1"	28.67	122.0*	55 3*	122.0*	55 3*	63.0	28 6	40.7*	18 5*	135.9*	61 6*	135.9*	61 6*
	30	9.14	72.9	92' 8"	28.25	98.8*	44 8*	95.4	43 3	49.8	22 6	33.6*	15 2*	116.1*	52 7*	116.1*	52 7*
	35	10.67	69.5	91' 0"	27.73	82.7*	37 5*	74.1	33 6	40.7	18 5	28.4*	12 9*	97.2*	44 1*	97.2*	44 1*
	40	12.19	66.1	88' 11"	27.11	69.9	31 7	60.0	27 2	34.1	15 5	24.3*	11 0*	83.4*	37 8*	82.1	37 2
	50	15.24	58.9	83' 9"	25.52	50.7	23 0	42.9	19 5	25.3	11 5	17.7	8 0	64.2*	29 1*	59.2	26 8
	60	18.29	51.1	76' 9"	23.38	39.1	17 7	32.6	14 8	19.5	8 8	13.2	6 0	51.4	23 3	45.7	20 7
	70	21.34	42.4	67' 4"	20.52	31.3	14 2	25.9	11 7	15.4	7 0	10.0	4 5	41.6	18 9	36.6	16 6
	80	24.38	31.8	54' 1"	16.48	25.8	11 7	21.0	9 5	12.4	5 6	7.6	3 4	34.5	15 6	30.2	13 7
	90	27.43	16.0	31' 6"	9.61	21.5	9 8	17.3	7 8	10.0	4 5	5.8	2 6	29.2	13 2	25.4	11 5
110' (33.53 m)	25	7.62	78.7	114' 7"	34.91	112.2*	50 9*	112.2*	50 9*	62.8	28 5	40.2*	18 2*	112.2*	50 9*	112.2*	50 9*
	30	9.14	76.1	113' 5"	34.57	98.5*	44 7*	95.5	43 3	49.6	22 5	33.1*	15 0*	106.7*	48 4*	106.7*	48 4*
	35	10.67	73.4	112' 1"	34.16	82.3*	37 3*	74.1	33 6	40.5	18 4	28.0*	12 7*	93.9*	42 6*	93.9*	42 6*
	40	12.19	70.6	110' 5"	33.66	69.8	31 7	60.0	27 2	33.9	15 4	23.9*	10 8*	82.3*	37 3*	82.1	37 2
	50	15.24	69.0	108' 1"	33.03	50.6	23 0	42.8	19 4	25.1	11 4	17.5	7 9	63.9*	29 0*	59.0	26 8
	60	18.29	64.2	103' 9"	31.72	39.0	17 7	32.5	14 7	19.3	8 8	13.0	5 9	51.3	23 3	45.6	20 1
	70	21.34	59.2	118' 4"	36.08	31.2	14 2	25.9	11 7	15.2	6 9	9.8	4 4	41.4	18 8	36.5	16 6
	80	24.38	54.0	111' 9"	34.07	25.8	11 7	21.0	9 5	12.2	5 5	7.5	3 4	34.4	15 6	30.1	13 7
	90	27.43	48.3	103' 9"	31.61	21.6	9 8	17.3	7 8	9.9	4 5	5.7	2 6	29.2	13 2	25.4	11 5
	100	30.48	28.7	59' 6"	18.12	18.3	8 3	14.5	6 6	8.0	3 6	4.3	1 9	25.1	11 4	21.7	9 8
110	33.53	14.5	34' 2"	10.42	15.6	7 1	12.1	5 5	6.5	2 9	3.0	1 4	21.7	9 8	18.6	8 4	
130' (39.62 m)	30	9.14	78.2	133' 11"	40.82	87.0*	39 5*	87.7*	39 8*	49.3	22 4	32.5*	14 7*	87.7*	39 8*	87.7*	39 8*
	35	10.67	76.0	132' 10"	40.47	81.9*	37 1*	74.0	33 6	40.1	18 2	27.4*	12 4*	84.1*	38 1*	84.1*	38 1*
	40	12.19	73.7	131' 5"	40.06	69.6	31 6	59.8	27 1	33.5	15 2	23.3*	10 6*	78.5*	35 6*	78.5*	35 6*
	50	15.24	69.0	128' 1"	39.03	50.4	22 9	42.6	19 3	24.8	11 2	17.2	7 8	61.7*	27 9*	58.8	26 7
	60	18.29	64.2	123' 9"	37.72	38.7	17 6	32.3	14 6	19.0	8 6	12.7	5 8	51.0	23 1	45.3	20 5
	70	21.34	59.2	118' 4"	36.08	30.9	14 0	25.6	11 6	14.9	6 7	9.5	4 3	41.1	18 6	36.3	16 5
	80	24.38	54.0	111' 9"	34.07	25.5	11 6	20.8	9 4	11.9	5 4	7.2	3 3	34.1	15 5	29.8	13 5
	90	27.43	48.3	103' 9"	31.61	21.3	9 7	17.1	7 7	9.6	4 4	5.4	2 4	29.0	13 1	25.2	11 4
	100	30.48	42.1	93' 9"	28.58	18.0	8 2	14.3	6 5	7.8	3 5	4.0	1 8	24.9	11 3	21.5	9 7
	110	33.53	35.0	81' 3"	24.75	15.4	7 0	12.0	5 4	6.2	2 8	2.8	1 3	21.6	9 8	18.5	8 4
120	36.58	26.3	64' 4"	19.61	13.2	6 0	10.1	4 6	5.0	2 3	—	—	18.8	8 5	16.0	7 3	
130	39.62	13.3	36' 8"	11.16	11.4	5 2	8.5	3 8	3.9	1 8	—	—	16.5	7 5	13.9	6 3	
150' (45.72 m)	30	9.14	79.8	154' 4"	47.03	71.9*	32 6*	71.9*	32 6*	48.9	22 2	31.8*	14 4*	71.9*	32 6*	71.9*	32 6*
	35	10.67	77.9	153' 4"	46.73	70.1*	31 8*	70.1*	31 8*	39.7	18 0	26.8*	12 2*	70.1*	31 2*	70.1*	31 2*
	40	12.19	75.9	152' 2"	46.38	66.4*	30 1*	59.6	27 0	33.1	15 0	22.7*	10 3*	66.4*	30 1*	66.4*	30 1*
	50	15.24	71.9	149' 3"	45.50	50.1	22 7	42.3	19 2	24.4	11 1	16.8	7 6	55.0*	24 9*	55.0*	24 9*
	60	18.29	67.9	145' 7"	44.38	38.3	17 4	31.9	14 5	18.6	8 4	12.3	5 6	47.6*	21 6*	45.0*	20 4*
	70	21.34	63.7	141' 1"	43.01	30.5	13 8	25.3	11 5	14.5	6 6	9.1	4 1	40.8	18 5	35.9	16 3
	80	24.38	59.3	135' 8"	41.36	25.2	11 4	20.4	9 3	11.5	5 2	6.8	3 1	33.7	15 3	29.5	13 4
	90	27.43	54.8	129' 3"	39.38	21.0	9 5	16.8	7 6	9.2	4 2	5.0	2 3	28.7	13 0	24.9	11 3
	100	30.48	50.0	121' 6"	37.03	17.7	8 0	13.9	6 3	7.4	3 4	3.6	1 6	24.5	11 1	21.1	9 6
	110	33.53	44.8	112' 4"	34.23	15.1	6 8	11.7	5 3	5.9	2 7	2.4	1 1	21.2	9 6	18.1	8 2
120	36.58	39.0	101' 2"	30.83	12.9	5 8	9.8	4 4	4.6	2 1	—	—	18.5	8 4	15.7	7 1	
130	39.62	32.5	87' 3"	26.60	11.1	5 0	8.3	3 8	3.6	1 6	—	—	16.3	7 4	13.6	6 2	
140	42.67	24.5	68' 10"	20.99	9.6	4 4	6.9	3 1	2.7	1 2	—	—	14.3	6 5	11.9	5 4	
150	45.72	12.4	38' 11"	11.85	8.3	3 8	5.8	2 6	—	—	—	—	12.7	5 8	10.4	4 7	

① Capacities shown in thousands of pounds and kilograms.

② Measured vertically from center of boom head sheave to ground.

③ Capacities on outriggers for 360° swing applicable only when front center jack and front and rear outriggers are set in proper working position.

HC-238B lifting crane capacities — open throat boom

Refer to Notes page 4.

Boom						Capacities ①												
Length	Radius		Angle	Boom point height ②		"A" upper and "A" bumper counterweights								"AB" upper and "A" bumper counterweights				
						On outriggers ③				On tires (static)				On outriggers only ③				
	Ft.	m	Deg.	Ft.	m	Over rear		Over side & 360° swing ③		Over rear		Over side		Over rear		Over side & 360° swing ③		
						Lbs.	kgs	Lbs.	kgs	Lbs.	kgs	Lbs.	kgs	Lbs.	kgs	Lbs.	kgs	
170' (51.82 m)	35	10.67	79.3	173' 9"	52.95	53.2*	24 1*	53.2*	24 1*	39.3	17 8	26.1*	11 8*	53.2*	24 1*	53.2*	24 1*	
	40	12.19	77.6	172' 8"	52.64	50.7*	23 0*	50.7*	23 0*	32.6	14 8	22.0*	10 0*	50.7*	23 0*	50.7*	23 0*	
	50	15.24	74.1	170' 2"	51.87	44.4*	20 1*	42.0	19 1	23.9	10 8	16.1*	7 3*	44.4*	20 1*	44.4*	20 1*	
	60	18.29	70.6	167' 0"	50.90	37.9	17 2	31.5	14 3	18.1	8 2	11.8	5 4	38.8*	17 6*	38.8*	17 6*	
	70	21.34	67.0	163' 1"	49.72	30.1	13 7	24.9	11 3	14.0	6 4	8.6	3 9	33.7*	15 3*	33.7*	15 3*	
	80	24.38	63.3	158' 6"	48.30	24.8	11 2	20.0	9 1	11.0	5 0	6.3	2 9	27.3*	12 4*	27.3*	12 4*	
	90	27.43	59.4	153' 0"	46.64	20.6	9 3	16.4	7 4	8.7	3 9	4.5	2 0	24.3*	11 0*	24.3*	11 0*	
	100	30.48	55.4	146' 7"	44.69	17.3	7 8	13.5	6 1	6.8	3 1	3.1	1 4	21.3*	9 7*	20.7	9 4	
	110	33.53	51.2	139' 2"	42.42	14.7	6 7	11.2	5 1	5.3	2 4	—	—	19.0*	8 6*	17.7	8 0	
	120	36.58	46.7	130' 6"	39.77	12.5	5 7	9.4	4 3	4.1	1 9	—	—	16.9*	7 7*	15.3	6 9	
	130	39.62	41.0	120' 3"	36.65	10.7	4 8	7.8	3 5	3.0	1 4	—	—	15.0*	6 8*	13.2	6 0	
	140	42.67	36.6	108' 0"	32.92	9.2	4 2	6.5	2 9	2.1	9	—	—	13.4*	6 1*	11.5	5 2	
	150	45.72	30.5	92' 11"	28.32	7.9	3 6	5.4	2 4	—	—	—	—	12.1*	5 5*	10.0	4 5	
	160	48.77	23.0	73' 1"	22.27	6.7	3 0	4.4	2 0	—	—	—	—	10.7	4 8	8.7	3 9	
	170	51.82	11.6	41' 0"	12.49	5.7	2 6	3.5	1 6	—	—	—	—	9.2	4 2	7.6	3 4	
	190' (57.91 m)	40	12.19	78.9	193' 2"	58.87	40.1*	18 2*	40.1*	18 2*	—	—	—	—	40.1*	18 2*	40.1*	18 2*
		50	15.24	75.8	190' 11"	58.18	35.1*	15 9*	35.1*	15 9*	—	—	—	—	35.1*	15 9*	35.1*	15 9*
60		18.29	72.7	188' 1"	57.32	28.0*	12 7*	28.0*	12 7*	—	—	—	—	28.0*	12 7*	28.0*	12 7*	
70		21.34	69.5	184' 8"	56.28	24.5*	11 1*	24.5*	11 1*	—	—	—	—	24.5*	11 1*	24.5*	11 1*	
80		24.38	66.3	180' 7"	55.04	21.4*	9 7*	19.6	8 9	—	—	—	—	21.4*	9 7*	21.4*	9 7*	
90		27.43	62.9	175' 10"	53.59	18.9*	8 6*	16.0	7 3	—	—	—	—	18.9*	8 6*	18.9*	8 6*	
100		30.48	59.5	170' 4"	51.92	16.5*	7 5*	13.1	5 9	—	—	—	—	16.5*	7 5*	16.5*	7 5*	
110		33.53	55.9	164' 0"	49.99	14.2	6 4	10.8	4 9	—	—	—	—	14.7*	6 7*	14.7*	6 7*	
120		36.58	52.2	156' 9"	47.78	12.1	5 5	9.0	4 1	—	—	—	—	13.1*	5 9*	13.1*	5 9*	
130		39.62	48.3	148' 5"	45.24	10.3	4 7	7.4	3 4	—	—	—	—	11.7*	5 3*	11.7*	5 3*	
140		42.67	44.1	138' 10"	42.32	8.8	4 0	6.1	2 8	—	—	—	—	10.6*	4 8*	10.6*	4 8*	
150		45.72	39.6	127' 8"	38.91	7.4	3 4	5.0	2 3	—	—	—	—	9.4*	4 3*	9.4*	4 3*	
160		48.77	34.5	114' 5"	34.87	6.3	2 9	4.0	1 8	—	—	—	—	8.5*	3 9*	8.3	3 8	
170		51.82	28.8	98' 2"	29.83	5.3	2 4	3.2	1 5	—	—	—	—	7.7*	3 5*	7.2	3 3	
180		54.86	21.7	77' 0"	23.47	4.4	2 0	2.4	1 1	—	—	—	—	7.1*	3 2*	6.2	2 8	
190		57.91	11.0	43' 0"	13.10	3.7	1 7	—	—	—	—	—	—	6.4*	2 9*	5.3	2 4	
210' (64.01 m)		50	15.24	77.2	211' 5"	64.45	25.7*	11 7*	25.7*	11 7*	—	—	—	—	25.7*	11 7*	25.7*	11 7*
	60	18.29	74.4	208' 11"	63.68	22.5*	10 2*	22.5*	10 2*	—	—	—	—	22.5*	10 2*	22.5*	10 2*	
	70	21.34	71.5	205' 10"	62.75	19.7*	8 9*	19.7*	8 9*	—	—	—	—	19.7*	8 9*	19.7*	8 9*	
	80	24.38	68.6	202' 3"	61.64	17.2*	7 8*	17.2*	7 8*	—	—	—	—	17.2*	7 8*	17.2*	7 8*	
	90	27.43	65.7	198' 0"	60.36	15.1*	6 8*	15.1*	6 8*	—	—	—	—	15.1*	6 8*	15.1*	6 8*	
	100	30.48	62.6	193' 2"	58.88	13.2*	6 0*	12.7	5 8	—	—	—	—	13.2*	6 0*	13.2*	6 0*	
	110	33.53	59.5	187' 8"	57.20	11.7*	5 3*	10.4	4 7	—	—	—	—	11.7*	5 3*	11.7*	5 3*	
	120	36.58	56.3	181' 5"	55.29	10.3*	4 7*	8.5	3 9	—	—	—	—	10.3*	4 7*	10.3*	4 7*	
	130	39.62	53.0	174' 3"	53.12	9.1*	4 1*	6.9	3 1	—	—	—	—	9.1*	4 1*	9.1*	4 1*	
	140	42.67	49.5	166' 3"	50.67	8.3*	3 8*	5.6	2 5	—	—	—	—	8.3*	3 8*	8.3*	3 8*	
	150	45.72	45.8	157' 1"	47.89	7.0	3 2	4.5	2 0	—	—	—	—	7.4*	3 4*	7.4*	3 4*	
	160	48.77	41.8	146' 8"	44.71	5.8	2 6	3.5	1 6	—	—	—	—	6.7*	3 0*	6.7*	3 0*	
	170	51.82	37.5	138' 8"	41.04	4.9	2 2	2.7	1 2	—	—	—	—	6.0*	2 7*	6.0*	2 7*	
	180	54.86	32.8	120' 5"	36.71	4.0	1 8	—	—	—	—	—	—	5.5*	2 5*	5.5*	2 5*	
	190	57.91	27.4	103' 2"	31.45	3.2	1 5	—	—	—	—	—	—	4.9*	2 2*	4.9*	2 2*	
	200	60.96	20.7	80' 9"	24.61	2.5	1 1	—	—	—	—	—	—	4.6*	2 1*	4.1	1 9	
	210	64.01	10.5	44' 10"	13.67	—	—	—	—	—	—	—	—	4.1*	1 9*	3.4	1 5	
230' (70.10 m)	50	15.24	78.3	231' 11"	70.69	21.0*	9 5*	21.0*	9 5*	—	—	—	—	21.0*	9 5*	21.0*	9 5*	
	60	18.29	75.8	229' 7"	69.99	18.4*	8 3*	18.4*	8 3*	—	—	—	—	18.4*	8 3*	18.4*	8 3*	
	70	21.34	73.2	226' 10"	69.14	16.1*	7 3*	16.1*	7 3*	—	—	—	—	16.1*	7 3*	16.1*	7 3*	
	80	24.38	70.6	223' 7"	68.14	13.8*	6 3*	13.8*	6 3*	—	—	—	—	13.8*	6 3*	13.8*	6 3*	
	90	27.43	67.9	219' 9"	66.99	12.1*	5 5*	12.1*	5 5*	—	—	—	—	12.1*	5 5*	12.1*	5 5*	
	100	30.48	65.2	215' 5"	65.67	10.6*	4 8*	10.6*	4 8*	—	—	—	—	10.6*	4 8*	10.6*	4 8*	
	110	33.53	62.4	210' 6"	64.17	9.4*	4 3*	9.4*	4 3*	—	—	—	—	9.4*	4 3*	9.4*	4 3*	
	120	36.58	59.6	205' 0"	62.48	8.2*	3 7*	8.0	3 6	—	—	—	—	8.2*	3 7*	8.2*	3 7*	
	130	39.62	56.6	198' 9"	60.58	7.3*	3 3*	6.5	2 9	—	—	—	—	7.3*	3 3*	7.3*	3 3*	
	140	42.67	53.6	191' 9"	58.45	6.5*	2 9*	5.2	2 4	—	—	—	—	6.5*	2 9*	6.5*	2 9*	
	150	45.72	50.4	184' 0"	56.07	5.9*	2 7*	4.0	1 8	—	—	—	—	5.9*	2 7*	5.9*	2 7*	
	160	48.77	47.1	175' 3"	53.40	5.2*	2 4*	3.1	1 4	—	—	—	—	5.2*	2 4*	5.2*	2 4*	
	170	51.82	43.6	165' 4"	50.40	4.4	2 0	2.2	1 0	—	—	—	—	4.7*	2 1*	4.7*	2 1*	
	180	54.86	39.9	154' 2"	46.98	3.5	1 6	—	—	—	—	—	—	4.3*	1 9*	4.3*	1 9*	
	190	57.91	35.8	141' 3"	43.06	2.7	1 2	—	—	—	—	—	—	3.9*	1 8*	3.9*	1 8*	
	200	60.96	31.3	126' 2"	38.46	2.0	9	—	—	—	—	—	—	3.5*	1 6*	3.5*	1 6*	
	210	64.01	26.1	107' 11"	32.90	—	—	—	—	—	—	—	—	3.2*	1 5*	2.9	1 3	
220	67.06	19.7	84' 4"	25.70	—	—	—	—	—	—	—	—	2.8*	1 3*	2.2	1 0		
230	70.10	10.0	46' 8"	14.22	—	—	—	—	—	—	—	—	2.0*	9*	1.7	8		

Not applicable

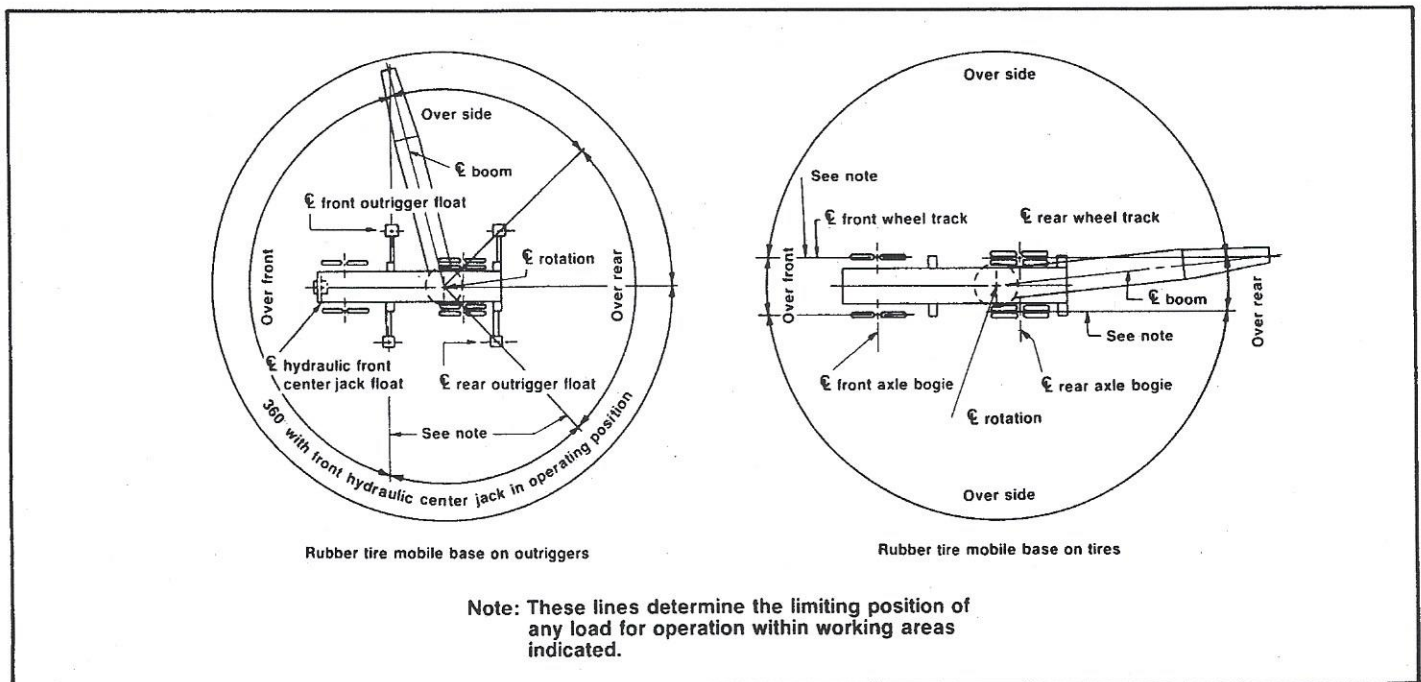
① Capacities shown in thousands of pounds and kilograms.
 ② Measured vertically from center of boom head sheave to ground.
 ③ Capacities on outriggers for 360° swing applicable only when front center jack and front and rear outrigger are set in proper working position.

HC-238B lifting crane capacities — open throat boom

Notes — lifting crane capacities, tubular boom with open throat top section

1. The capacities included in this chart are the maximum allowable, and are based on machine standing level on firm supporting surface under ideal job conditions. Capacities are based on 85% of minimum tipping loads unless marked with an asterisk (*).
 - a. Asterisk indicates capacities are based on factors other than those which would cause a tipping condition.
2. Capacities are based on freely suspended loads and make no allowance for such factors as the effect of wind, supporting surface conditions, inflation of tires, and operating speeds. Operator must reduce load ratings accordingly to take such conditions into account. Deduction from rated capacities must be made for weight of jib, hook block, ball/hook, sling, spreader bar, or other suspended gear.
3. Boom lengths exceeding **160' (48.77 m)** — boom midpoint suspension pendants required.
4. Main boom lengths must not exceed **230' (70.10 m)**.
5. For lifting **280,000 lbs. (127 005 kg)**, 10-part load hoist line (1" diameter — 25 mm, Type "N" wire rope) is required. Check parts of line required for all capacities.
6. Jib cannot be used on boom lengths exceeding **200' (60.96 m)**.
7. Machine equipped with "AB" upper counterweight — do not swing over side until outriggers have been set.
8. Least stable position is over side.
9. Telescopic boom live mast, pinned in the extended (**30' — 9.14 m**) position, required for all open throat boom capacities.
10. When handling loads on main load hoist line with jib mounting on boom, reduce rated boom capacities as follows to compensate for jib weights —
 - 30' (9.14 m) jib — 2,200 lbs. (998 kg)**
 - 40' (12.19 m) jib — 2,540 lbs. (1 152 kg)**
 - 50' (15.24 m) jib — 2,870 lbs. (1 302 kg)**
 - 60' (18.29 m) jib — 3,200 lbs. (1 452 kg)**
11. When making lifts on outriggers, machine must be level and supported on fully extended and set outriggers with tires free of supporting surface.
12. Capacities apply only to the machine as originally manufactured and normally equipped by FMC Corporation Construction Equipment Group.

HC-238B working areas



GENERAL INFORMATION ONLY

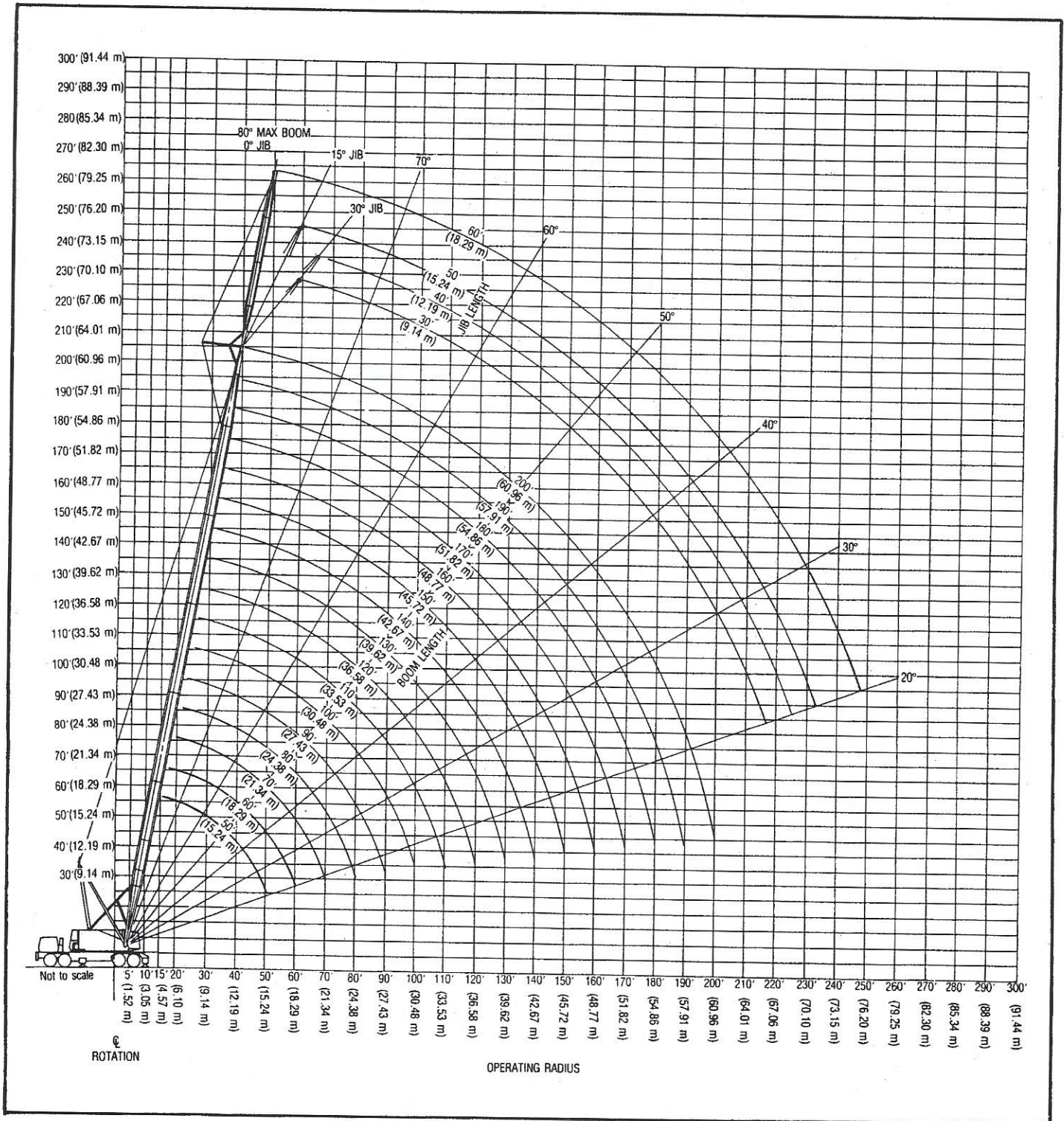
HC-238B boom/jib working ranges — open throat boom

Boom — tubular: 60" (1.52 m) wide, 54" (1.37 m) deep with open throat top section, 1 1/2" (35 mm) boom pendants, boom live mast, and boom midpoint suspension pendants as required.

Jib — tubular: 36" (0.91 m) deep, 30" (0.76 m) wide.

Counterweight — Refer to charts page 1.

Mounting — rubber tire mobile base: FMC, 8 x 4 drive, 270" (6.86 m) wheelbase, 11' 10" (3.61 m) wide.



GENERAL INFORMATION ONLY

LINK-BELT

Construction Equipment Company

Serial
Number

22H8-0460C

HC-238B tubular jib capacities for open throat boom - over rear

1. Capacities are for an HC-238B on L-B 270" w.b., 11'-10" wide, 8x4 carrier with specified counterweighting per counterweighting instruction plate 22P1858.
2. Capacities are for on outrigger working areas over the rear as described on plate 22P1355 and are based on the machine standing level on firm supporting surface and all tires off the supporting surface.
3. Capacities are limited to a L-B 54" x 60" cross-section boom with a 25' open throat top section and a L-B 30" x 36" cross-section jib with 13'-6" high jib strut properly assembled.
4. The pinned telescopic live mast must be used in the extended 30' position for all capacities on the chart.
5. For boom lengths exceeding 160', the midpoint suspension pendants (properly adjusted are required).
6. Two parts of 7/8" dia. L-BS Type "N" wire rope are required for maximum lifts. For single part operation, 7/8" dia. L-BS Type "P" wire rope is recommended.
7. Capacities are for 30', 40', 50', and 60' jib lengths only.
8. A jib cannot be used on a open throat boom that is longer than 200'.
9. All capacities are in pounds and are not more than 85% of the tipping loads. Those capacities followed by an asterisk (*) are governed by factors other than those that would cause a tipping condition.
10. A deduction must be made from the jib capacities for weight of hook block, hook, sling, grapple, load weighing devices, etc.
11. When using main hook, while jib is attached, reduce boom capacities by the following values.
 - a. 30' jib - 2,200 lbs.
 - b. 40' jib - 2,540 lbs.
 - c. 50' jib - 2,870 lbs.
 - d. 60' jib - 3,200 lbs.

HC-238B counterweighting instructions

Counterweight combinations must be used only as shown on this chart. Otherwise machine overturn or other damage may occur.

Counterweight Combinations ①	ALLOWABLE BOOM LENGTHS ②					
	25' Open Throat		Hammerhead		45' Tapered Tip	
	W/O Jib	W/Jib	W/O Jib	W/Jib	W/O Jib	W/Jib
"A" Upper & "A" Bumper	50'—230'	—	30'—230'	—	110'—230'	—
"AB" Upper & "A" Bumper ③	50'—230'	50'—200'	30'—230'	50'—200'	110'—230'	110'—230'

① "A" Upper - 30,000 lb.; "AB" Upper - 60,000 lb.
"A" Bumper - 11,400 lb.

② See operator's manual for boom and jib length limitations.

③ Do not swing over the side until outriggers are fully extended and set with "AB" upper ctwt., or machine overturn will occur.

Link-Belt Construction Equipment Company Lexington, Kentucky

22P1858

BOOM LGTH	JIB LGTH	LOAD RAD	JIB ANGLE TO BOOM											
			0°			15°			30°					
			BOOM ANGLE	JIB POINT HEIGHT	CAPACITY	BOOM ANGLE	JIB POINT HEIGHT	CAPACITY	BOOM ANGLE	JIB POINT HEIGHT	CAPACITY			
50	30	18	79.6	85.2	29600*									
50	30	19	78.8	85.0	29400*									
50	30	20	78.1	84.8	29200*									
50	30	25	74.4	83.6	28200*	79.6	83.3	26200*						
50	30	30	70.7	82.0	27200*	75.8	81.8	25200*						
50	30	35	66.8	80.0	26200*	71.9	79.8	24200*	76.5	78.1	17900*			
50	30	40	62.9	77.6	25200*	67.9	77.5	23100*	72.4	75.7	16600*			
50	30	50	54.5	71.5	22900*	59.4	71.4	20300*	63.6	69.5	14700*			
50	30	60	45.1	63.0	19600*	49.9	62.9	16500*	53.7	60.6	13200*			
50	30	70	33.8	50.8	15800*	38.4	50.6	15300*						
50	40	20	79.4	94.8	25200*									
50	40	25	76.2	93.7	24400*									
50	40	30	72.9	92.2	23500*	79.1	91.9	21700*						
50	40	35	69.5	90.4	22600*	75.7	90.2	20500*						
50	40	40	66.1	88.3	21600*	72.2	88.1	19300*	77.9	85.9	14300*			
50	40	50	58.9	82.9	19100*	65.0	82.9	16700*	70.4	80.5	12500*			
50	40	60	51.1	75.8	16400*	57.1	75.8	14200*	62.2	73.2	11200*			
50	40	70	42.4	66.2	13600*	48.2	66.2	11800*	52.9	63.2	10300*			
50	40	80	31.8	52.9	11400*	37.4	52.7	10500*						
50	50	25	77.6	103.9	21300*									
50	50	30	74.6	102.6	20500*									
50	50	35	71.6	101.0	19800*	78.7	100.7	18100*						
50	50	40	68.6	99.1	19000*	75.6	98.9	16900*						
50	50	50	62.3	94.4	16600*	69.3	94.3	14200*	75.7	91.8	11200*			
50	50	60	55.6	88.2	13900*	62.5	88.2	11800*	68.7	85.5	9700*			
50	50	70	48.3	80.2	11400*	55.1	80.3	9900*	61.0	77.3	8200*			
50	50	80	40.1	69.8	9300*	46.7	69.9	8200*	52.1	66.3	7300*			
50	50	90	30.1	55.4	7800*	36.5	55.3	7100*						
50	60	25	78.7	114.3	19300*									
50	60	30	76.1	113.1	18600*									
50	60	35	73.4	111.7	17900*									
50	60	40	70.6	110.0	17100*	78.4	109.9	15700*						
50	60	50	65.0	105.8	15400*	72.7	105.8	13000*	80.0	103.2	9700*			
50	60	60	59.1	100.4	12600*	66.7	100.5	10200*	73.8	97.8	8000*			
50	60	70	52.8	93.5	9700*	60.4	93.8	8200*	67.2	90.8	6700*			

BOOM LGTH	JIB LGTH	LOAD RAD	JIB ANGLE TO BOOM								
			0°			15°			30°		
			BOOM ANGLE	JIB POINT HEIGHT	CAPACITY	BOOM ANGLE	JIB POINT HEIGHT	CAPACITY	BOOM ANGLE	JIB POINT HEIGHT	CAPACITY
50	60	80	45.9	84.8	7900*	53.4	85.2	6800*	59.9	81.8	5700*
50	60	90	38.2	73.6	6300*	45.5	73.9	5700*	51.4	69.9	5200*
50	60	100	28.7	58.4	5400*	35.7	58.4	5100*			
60	30	20	79.4	95.0	29600*						
60	30	25	76.2	93.9	28700*						
60	30	30	72.9	92.5	27800*	77.4	92.3	25600*			
60	30	35	69.5	90.8	26900*	74.0	90.6	24700*	78.2	88.8	18900*
60	30	40	66.1	88.7	26000*	70.6	88.5	23800*	74.6	86.7	17200*
60	30	50	58.9	83.5	24100*	63.3	83.4	21800*	67.1	81.4	15300*
60	30	60	51.1	76.4	22000*	55.5	76.3	18700*	59.0	74.1	13900*
60	30	70	42.4	67.0	18600*	46.6	66.9	15800*	49.7	64.2	12800*
60	30	80	31.8	53.7	15700*	35.8	53.4	15100*			
60	40	25	77.6	104.0	24800*						
60	40	30	74.6	102.7	24000*						
60	40	35	71.6	101.1	23200*	77.2	100.7	21000*			
60	40	40	68.6	99.2	22400*	74.1	98.9	19900*	79.2	96.6	14600*
60	40	50	62.3	94.5	20300*	67.8	94.3	17700*	72.7	91.9	1300
60	40	60	55.6	88.3	17900*	61.0	88.2	15400*	65.7	85.6	11700*
60	40	70	48.3	80.4	15500*	53.6	80.3	13100*	58.0	77.4	10700*
60	40	80	40.1	70.0	12900*	45.3	69.9	11400*			
60	40	90	30.1	55.6	11200*	35.0	55.3	10300*			
60	50	25	78.7	114.2	21600*						
60	50	30	76.1	113.0	20900*						
60	50	35	73.4	111.5	20200*	79.8	111.1	18600*			
60	50	40	70.6	109.8	19500*	77.0	109.5	17400*			
60	50	50	65.0	105.6	17700*	71.3	105.4	15100*	77.2	102.7	11500*
60	50	60	59.1	100.1	15300*	65.4	100.1	12600*	71.0	97.2	10300*
60	50	70	52.8	93.2	12700*	59.0	93.2	10900*	64.4	90.2	8600*
60	50	80	45.9	84.5	10800*	52.0	84.5	9100*	57.1	81.1	7800*
60	50	90	38.2	73.3	8900*	44.1	73.3	7900*			
60	50	100	28.7	58.0	7700*						
60	60	25	79.7	124.5	19500*						
60	60	30	77.2	123.4	18900*						

BOOM LGTH	JIB LGTH	LOAD RAD	JIB ANGLE TO BOOM								
			0°			15°			30°		
			BOOM ANGLE	JIB POINT HEIGHT	CAPACITY	BOOM ANGLE	JIB POINT HEIGHT	CAPACITY	BOOM ANGLE	JIB POINT HEIGHT	CAPACITY
60	60	35	74.8	122.1	18200*						
60	60	40	72.3	120.6	17600*	79.4	120.3	16100*			
60	60	50	67.2	116.8	16200*	74.3	116.7	13800*			
60	60	60	61.9	111.9	14000*	68.9	111.9	11300*	75.4	109.0	8400*
60	60	70	56.3	105.8	11400*	63.3	106.0	8800*	69.5	102.8	7200*
60	60	80	50.4	98.3	8800*	57.3	98.5	7600*	63.3	95.1	5900*
60	60	90	43.9	88.9	7500*	50.6	89.2	6300*	56.3	85.3	5500*
60	60	100	36.5	77.0	6000*	43.1	77.1	5600*			
60	60	110	27.4	60.8	5400*						

70	30	25	77.6	104.2	29100*						
70	30	30	74.6	102.9	28300*	78.7	102.6	26000*			
70	30	35	71.6	101.4	27500*	75.7	101.1	25200*	79.5	99.3	19300*
70	30	40	68.6	99.6	26700*	72.7	99.3	24400*	76.3	97.4	17800*
70	30	50	62.3	95.0	25000*	66.3	94.8	22700*	69.8	92.8	15900*
70	30	60	55.6	88.9	23200*	59.5	88.8	20300*	62.8	86.6	14500*
70	30	70	48.3	81.0	20900*	52.2	80.9	17400*	55.2	78.5	13400*
70	30	80	40.1	70.7	17700*	43.8	70.5	15600*			
70	30	90	30.1	56.4	15600*	33.6	56.1	15000*			

70	40	25	78.7	114.2	25100*						
70	40	30	76.1	113.0	24300*						
70	40	35	73.4	111.6	23600*	78.4	111.2	21400*			
70	40	40	70.6	109.9	22900*	75.7	109.5	20500*			
70	40	50	65.0	105.7	21200*	70.0	105.4	18500*	74.5	102.9	13300*
70	40	60	59.1	100.3	19100*	64.0	100.1	16400*	68.3	97.4	12100*
70	40	70	52.8	93.4	16900*	57.7	93.2	14400*	61.7	90.4	11200*
70	40	80	45.9	84.7	14700*	50.7	84.6	12200*	54.5	81.3	10400*
70	40	90	38.2	73.5	12300*	42.8	73.3	11100*			
70	40	100	28.7	58.2	11000*						

70	50	25	79.7	124.4	21900*						
70	50	30	77.2	123.3	21200*						
70	50	35	74.8	122.0	20600*						
70	50	40	72.3	120.4	19900*	78.2	120.0	17900*			
70	50	50	67.2	116.6	18600*	73.0	116.3	15800*	78.4	113.5	11800*
70	50	60	61.9	111.7	16500*	67.7	111.5	13600*	72.9	108.6	10700*
70	50	70	56.3	105.6	14200*	62.1	105.5	11700*	67.0	102.3	9300*

BOOM LGTH	JIB LGTH	LOAD RAD	JIB ANGLE TO BOOM:								
			0°			15°			30°		
			BOOM ANGLE	JIB POINT HEIGHT	CAPACITY	BOOM ANGLE	JIB POINT HEIGHT	CAPACITY	BOOM ANGLE	JIB POINT HEIGHT	CAPACITY
70	50	80	50.4	98.0	12000*	56.0	98.0	10100*	60.8	94.6	8200*
70	50	90	43.9	88.6	10300*	49.4	88.5	8500*	53.8	84.7	7500*
70	50	100	36.5	76.6	8500*	41.8	76.5	7700*			
70	50	110	27.4	60.5	7500*						
70	60	30	78.2	133.6	19200*						
70	60	35	76.0	132.4	18600*						
70	60	40	73.7	131.0	18000*						
70	60	50	69.0	127.6	16700*	75.6	127.3	14400*			
70	60	60	64.2	123.2	15000*	70.7	123.1	12100*	76.7	119.9	8600*
70	60	70	59.2	117.7	12700*	65.7	117.7	9700*	71.4	114.4	7600*
70	60	80	54.0	111.0	10200*	60.3	111.1	8200*	65.9	107.6	6500*
70	60	90	48.3	102.9	8400*	54.6	103.0	7100*	59.9	99.2	5700*
70	60	100	42.1	92.8	7100*	48.2	92.9	5900*	53.2	88.6	5300*
70	60	110	35.0	80.2	5900*	41.0	80.2	5400*			
70	60	120	26.3	63.2	5300*						
80	30	25	78.7	114.4	29400*						
80	30	30	76.1	113.3	28700*	79.8	112.9	26300*			
80	30	35	73.4	111.9	28000*	77.1	111.6	25500*			
80	30	40	70.6	110.3	27200*	74.3	110.0	24800*	77.7	108.0	18200*
80	30	50	65.0	106.1	25700*	68.7	105.9	23300*	71.9	103.9	16400*
80	30	60	59.1	100.8	24200*	62.7	100.6	21600*	65.8	98.5	15000*
80	30	70	52.8	94.0	22500*	56.4	93.9	19000*	59.2	91.5	13900*
80	30	80	45.9	85.4	20000*	49.4	85.2	16300*	52.0	82.6	13000*
80	30	90	38.2	74.3	16900*	41.5	74.0	15500*			
80	30	100	28.7	59.1	15500*						
80	40	25	79.7	124.4	25300*						
80	40	30	77.2	123.3	24700*						
80	40	35	74.8	122.0	24000*	79.4	121.5	21800*			
80	40	40	72.3	120.5	23300*	76.9	120.1	20900*			
80	40	50	67.2	116.7	22000*	71.8	116.3	19100*	75.9	113.7	13700*
80	40	60	61.9	111.8	20100*	66.5	111.5	17200*	70.4	108.8	12500*
80	40	70	56.3	105.7	18200*	60.8	105.5	15400*	64.6	102.6	11500*
80	40	80	50.4	98.2	16100*	54.8	98.0	13500*	58.4	94.9	10800*
80	40	90	43.9	88.8	14100*	48.2	88.6	11800*	51.5	85.1	10200*
80	40	100	36.5	76.8	11900*	40.7	76.5	10900*			

BOOM LGTH	JIB LGTH	LOAD RAD	JIB ANGLE TO BOOM								
			0°			15°			30°		
			BOOM ANGLE	JIB POINT HEIGHT	CAPACITY	BOOM ANGLE	JIB POINT HEIGHT	CAPACITY	BOOM ANGLE	JIB POINT HEIGHT	CAPACITY
80	40	110	27.4	60.7	10900*						
80	50	30	78.2	133.5	21500*						
80	50	35	76.0	132.3	20900*						
80	50	40	73.7	130.9	20300*	79.1	130.4	18300*			
80	50	50	69.0	127.4	19100*	74.4	127.0	16400*	79.4	124.1	12000*
80	50	60	64.2	123.0	17400*	69.6	122.7	14300*	74.4	119.6	10900*
80	50	70	59.2	117.5	15400*	64.5	117.3	12300*	69.2	114.1	9800*
80	50	80	54.0	110.7	13200*	59.2	110.6	10900*	63.6	107.2	8500*
80	50	90	48.3	102.6	11400*	53.4	102.4	9500*	57.6	98.7	7900*
80	50	100	42.1	92.5	9800*	47.1	92.4	8300*	51.0	88.1	7100*
80	50	110	35.0	79.8	8300*	39.9	79.5	7500*			
80	50	120	26.3	62.8	7400*						
80	60	30	79.1	143.9	19400*						
80	60	35	77.0	142.8	18800*						
80	60	40	74.9	141.5	18300*						
80	60	50	70.6	138.3	17100*	76.7	137.9	14900*			
80	60	60	66.2	134.2	16000*	72.2	134.0	12800*	77.8	130.7	8800*
80	60	70	61.6	129.2	13800*	67.6	129.1	10600*	73.0	125.7	7900*
80	60	80	56.9	123.2	11600*	62.8	123.2	8700*	68.0	119.6	6900*
80	60	90	51.8	116.0	9300*	57.7	116.0	7700*	62.7	112.1	5900*
80	60	100	46.4	107.2	8000*	52.2	107.3	6600*	57.0	103.0	5500*
80	60	110	40.5	96.6	6800*	46.1	96.6	5800*	50.5	91.7	5100*
80	60	120	33.7	83.3	5800*	39.2	83.1	5300*			
80	60	130	25.4	65.5	5200*						
90	30	25	79.7	124.6	29600*						
90	30	30	77.2	123.6	29000*						
90	30	35	74.8	122.3	28300*	78.2	122.0	25800*			
90	30	40	72.3	120.8	27700*	75.7	120.5	25200*	78.8	118.5	19000*
90	30	50	67.2	117.1	26300*	70.6	116.8	23800*	73.5	114.8	16900*
90	30	60	61.9	112.3	24900*	65.2	112.1	22400*	68.1	109.9	15500*
90	30	70	56.3	106.3	23400*	59.6	106.1	20400*	62.3	103.8	14400*
90	30	80	50.4	98.8	21800*	53.6	98.6	18000*	56.1	96.1	13500*
90	30	90	43.9	89.5	19200*	47.0	89.3	15800*	49.3	86.4	12800*
90	30	100	36.5	77.6	16200*	39.5	77.3	15300*			

BOOM LGTH	JIB LGTH	LOAD RAD	JIB ANGLE TO BOOM									
			0°			15°			30°			
			BOOM ANGLE	JIB POINT HEIGHT	CAPACITY	BOOM ANGLE	JIB POINT HEIGHT	CAPACITY	BOOM ANGLE	JIB POINT HEIGHT	CAPACITY	
90	30	110	27.4	61.6	15400*							
90	40	30	78.2	133.6	24900*							
90	40	35	76.0	132.4	24300*							
90	40	40	73.7	131.0	23700*	78.0	130.5	21300*				
90	40	50	69.0	127.5	22500*	73.3	127.1	19600*	77.1	124.4	14000*	
90	40	60	64.2	123.1	21000*	68.4	122.7	17900*	72.1	120.0	12800*	
90	40	70	59.2	117.6	19200*	63.4	117.3	16200*	66.9	114.4	11900*	
90	40	80	54.0	110.9	17300*	58.1	110.7	14500*	61.4	107.6	11100*	
90	40	90	48.3	102.7	15500*	52.3	102.5	12700*	55.5	99.2	10500*	
90	40	100	42.1	92.7	13500*	46.0	92.4	11500*				
90	40	110	35.0	80.0	11700*	38.8	79.6	10700*				
90	40	120	26.3	63.1	10700*							
90	50	30	79.1	143.8	21700*							
90	50	35	77.0	142.6	21200*							
90	50	40	74.9	141.3	20600*	79.9	140.8	18600*				
90	50	50	70.6	138.1	19500*	75.6	137.6	16800*				
90	50	60	66.2	134.0	18200*	71.2	133.7	15000*	75.6	130.5	11200*	
90	50	70	61.6	129.0	16400*	66.6	128.7	13100*	70.9	125.5	10300*	
90	50	80	56.9	123.0	14400*	61.7	122.7	11600*	65.9	119.3	9000*	
90	50	90	51.8	115.7	12300*	56.6	115.5	10300*	60.6	111.8	8200*	
90	50	100	46.4	106.9	11000*	51.2	106.7	8900*	54.9	102.7	7600*	
90	50	110	40.5	96.2	9400*	45.1	96.0	8100*				
90	50	120	33.7	82.9	8200*	38.2	82.5	7300*				
90	50	130	25.4	65.1	7300*							
90	60	30	79.8	154.0	19600*							
90	60	35	77.9	153.0	19100*							
90	60	40	75.9	151.8	18500*							
90	60	50	71.9	148.8	17500*	77.6	148.4	15300*				
90	60	60	67.9	145.1	16400*	73.5	144.8	13400*	78.7	141.4	9100*	
90	60	70	63.7	140.5	14800*	69.3	140.3	11400*	74.3	136.8	8100*	
90	60	80	59.3	135.0	12800*	64.9	134.9	9400*	69.8	131.2	7200*	
90	60	90	54.8	128.5	10600*	60.3	128.4	8200*	65.0	124.5	6300*	
90	60	100	50.0	120.7	8700*	55.4	120.7	7200*	59.9	116.5	5700*	
90	60	110	44.8	111.4	7700*	50.1	111.4	6200*	54.4	106.8	5400*	

BOOM LGTH	JIB LGTH	LOAD RAD	JIB ANGLE TO BOOM								
			0°			15°			30°		
			BOOM ANGLE	JIB POINT HEIGHT	CAPACITY	BOOM ANGLE	JIB POINT HEIGHT	CAPACITY	BOOM ANGLE	JIB POINT HEIGHT	CAPACITY
90	60	120	39.0	100.2	6500*	44.3	100.1	5600*			
90	60	130	32.5	86.2	5700*	37.6	85.9	5200*			
90	60	140	24.5	67.7	5200*						
100	30	30	78.2	133.8	29300*						
100	30	35	76.0	132.6	28700*	79.1	132.3	26100*			
100	30	40	73.7	131.3	28000*	76.8	130.9	25500*	79.7	128.9	19300*
100	30	50	69.0	127.9	26800*	72.2	127.6	24200*	74.9	125.5	17200*
100	30	60	64.2	123.5	25500*	67.3	123.3	22900*	70.0	121.1	15900*
100	30	70	59.2	118.1	24200*	62.3	117.9	21400*	64.8	115.6	14800*
100	30	80	54.0	111.5	22800*	57.0	111.3	19300*	59.3	108.9	13900*
100	30	90	48.3	103.4	20900*	51.2	103.2	17000*	53.5	100.5	13100*
100	30	100	42.1	93.4	18400*	44.9	93.2	15700*			
100	30	110	35.0	80.8	15900*	37.8	80.5	15200*			
100	30	120	26.3	63.9	15300*						
100	40	30	79.1	143.8	25200*						
100	40	35	77.0	142.7	24600*						
100	40	40	74.9	141.4	24000*	78.9	140.8	21600*			
100	40	50	70.6	138.2	22900*	74.5	137.7	20100*	78.1	135.0	14200*
100	40	60	66.2	134.1	21600*	70.1	133.7	18500*	73.6	130.9	13100*
100	40	70	61.6	129.1	20000*	65.5	128.8	16900*	68.9	125.9	12200*
100	40	80	56.9	123.1	18400*	60.7	122.8	15400*	63.9	119.8	11400*
100	40	90	51.8	115.8	16600*	55.6	115.6	13800*	58.7	112.3	10800*
100	40	100	46.4	107.1	14900*	50.1	106.8	12000*	53.0	103.2	10200*
100	40	110	40.5	96.4	13000*	44.1	96.1	11300*			
100	40	120	33.7	83.1	11600*	37.2	82.6	10500*			
100	40	130	25.4	65.4	10600*						
100	50	30	79.8	153.9	21900*						
100	50	35	77.9	152.9	21400*						
100	50	40	75.9	151.7	20900*						
100	50	50	71.9	148.7	19800*	76.6	148.2	17300*			
100	50	60	67.9	144.9	18800*	72.5	144.5	15600*	76.7	141.3	11400*
100	50	70	63.7	140.3	17200*	68.3	140.0	13800*	72.4	136.6	10500*
100	50	80	59.3	134.8	15400*	63.9	134.5	12100*	67.8	131.0	9500*
100	50	90	54.8	128.2	13500*	59.3	128.0	11000*	63.1	124.3	8400*

BOOM LGTH	JIB LGTH	LOAD RAD	JIB ANGLE TO BOOM								
			0°			15°			30°		
			BOOM ANGLE	JIB POINT HEIGHT	CAPACITY	BOOM ANGLE	JIB POINT HEIGHT	CAPACITY	BOOM ANGLE	JIB POINT HEIGHT	CAPACITY
100	50	100	50.0	120.4	11800*	54.4	120.2	9700*	58.0	116.2	7900*
100	50	110	44.8	111.1	10500*	49.1	110.8	8500*	52.5	106.5	7300*
100	50	120	39.0	99.8	9100*	43.3	99.5	7900*			
100	50	130	32.5	85.8	8100*	36.6	85.3	7200*			
100	50	140	24.5	67.3	7200*						

100	60	35	78.6	163.2	19300*						
100	60	40	76.8	162.1	18800*						
100	60	50	73.1	159.4	17800*	78.4	158.9	15700*			
100	60	60	69.3	155.9	16800*	74.6	155.5	13900*	79.4	152.0	9500*
100	60	70	65.4	151.6	15600*	70.7	151.3	12100*	75.4	147.7	8400*
100	60	80	61.4	146.6	13700*	66.6	146.3	10200*	71.3	142.6	7500*
100	60	90	57.3	140.6	11800*	62.4	140.4	8600*	66.9	136.5	6700*
100	60	100	52.9	133.5	9800*	58.0	133.4	7800*	62.3	129.3	5900*
100	60	110	48.3	125.2	8400*	53.3	125.1	6800*	57.4	120.7	5600*
100	60	120	43.3	115.4	7400*	48.2	115.3	5900*	52.1	110.3	5200*
100	60	130	37.8	103.6	6300*	42.6	103.4	5500*			
100	60	140	31.4	89.1	5600*	36.1	88.6	5100*			
100	60	150	23.7	69.8	5100*						

110	30	30	79.1	144.0	29500*						
110	30	35	77.0	142.9	28900*	79.9	142.5	26300*			
110	30	40	74.9	141.7	28400*	77.8	141.3	25700*			
110	30	50	70.6	138.5	27200*	73.5	138.2	24600*	76.1	136.1	17600*
110	30	60	66.2	134.6	26100*	69.1	134.3	23400*	71.6	132.1	16300*
110	30	70	61.6	129.6	24800*	64.5	129.4	22200*	66.9	127.1	15200*
110	30	80	56.9	123.7	23600*	59.7	123.4	20400*	62.0	121.0	14300*
110	30	90	51.8	116.5	22200*	54.6	116.2	18300*	56.7	113.7	13500*
110	30	100	46.4	107.8	20200*	49.1	107.5	16200*	51.1	104.7	12900*
110	30	110	40.5	97.2	17800*	43.1	96.9	15600*			
110	30	120	33.7	83.9	15800*	36.2	83.5	15100*			
110	30	130	25.4	66.2	15300*						

110	40	30	79.8	154.0	25400*						
110	40	35	77.9	153.0	24800*						
110	40	40	75.9	151.8	24300*	79.6	151.2	21900*			
110	40	50	71.9	148.8	23300*	75.6	148.3	20500*	79.0	145.5	14400*
110	40	60	67.9	145.0	22200*	71.5	144.6	19000*	74.8	141.8	13300*

BOOM LGTH	JIB LGTH	LOAD RAD	JIB ANGLE TO BOOM								
			0°			15°			30°		
			BOOM ANGLE	JIB POINT HEIGHT	CAPACITY	BOOM ANGLE	JIB POINT HEIGHT	CAPACITY	BOOM ANGLE	JIB POINT HEIGHT	CAPACITY
110	40	70	63.7	140.4	20800*	67.3	140.1	17500*	70.5	137.1	12400*
110	40	80	59.3	134.9	19200*	62.9	134.6	16000*	66.0	131.5	11700*
110	40	90	54.8	128.4	17600*	58.3	128.1	14600*	61.2	124.8	11000*
110	40	100	50.0	120.6	16000*	53.5	120.3	13100*	56.2	116.8	10500*
110	40	110	44.8	111.3	14400*	48.2	111.0	11800*	50.7	107.2	10100*
110	40	120	39.0	100.0	12600*	42.4	99.6	11100*			
110	40	130	32.5	86.1	11400*	35.7	85.5	10300*			
110	40	140	24.5	67.6	10500*						
110	50	35	78.6	163.1	21600*						
110	50	40	76.8	162.0	21100*						
110	50	50	73.1	159.2	20200*	77.5	158.6	17600*			
110	50	60	69.3	155.7	19200*	73.7	155.2	16000*	77.6	151.9	11600*
110	50	70	65.4	151.4	17900*	69.8	151.0	14400*	73.6	147.6	10700*
110	50	80	61.4	146.3	16300*	65.7	146.0	12800*	69.4	142.5	9900*
110	50	90	57.3	140.3	14600*	61.5	140.0	11500*	65.1	136.3	8800*
110	50	100	52.9	133.2	12700*	57.1	133.0	10400*	60.5	129.1	8200*
110	50	110	48.3	124.9	11400*	52.4	124.7	9200*	55.7	120.5	7600*
110	50	120	43.3	115.1	10200*	47.3	114.8	8300*	50.4	110.2	7100*
110	50	130	37.8	103.3	8800*	41.7	102.9	7700*			
110	50	140	31.4	88.7	8000*	35.3	88.1	7000*			
110	50	150	23.7	69.4	7100*						
110	60	35	79.3	173.4	19500*						
110	60	40	77.6	172.4	19000*						
110	60	50	74.1	169.8	18100*	79.1	169.2	16000*			
110	60	60	70.6	166.5	17100*	75.6	166.1	14400*			
110	60	70	67.0	162.6	16200*	71.9	162.2	12700*	76.4	158.5	8600*
110	60	80	63.3	157.9	14600*	68.2	157.6	10900*	72.5	153.8	7800*
110	60	90	59.4	152.3	12800*	64.3	152.1	9100*	68.5	148.2	7000*
110	60	100	55.4	145.9	10900*	60.2	145.7	8200*	64.3	141.6	6100*
110	60	110	51.2	138.4	9000*	56.0	138.2	7400*	59.9	133.8	5700*
110	60	120	46.7	129.6	8100*	51.4	129.5	6400*	55.2	124.7	5400*
110	60	130	41.9	119.3	7100*	46.5	119.1	5800*	50.0	113.8	5100*
110	60	140	36.6	107.0	6000*	41.1	106.7	5400*			
110	60	150	30.5	91.8	5600*	34.8	91.2	5000*			
110	60	160	23.0	71.9	5100*						

BOOM LGTH	JIB LGTH	LOAD RAD	JIB ANGLE TO BOOM								
			0°			15°			30°		
			BOOM ANGLE	JIB POINT HEIGHT	CAPACITY	BOOM ANGLE	JIB POINT HEIGHT	CAPACITY	BOOM ANGLE	JIB POINT HEIGHT	CAPACITY
120	30	30	79.8	154.2	29700*						
120	30	35	77.9	153.2	29200*						
120	30	40	75.9	152.0	28600*	78.6	151.6	26000*			
120	30	50	71.9	149.1	27600*	74.7	148.7	24900*	77.1	146.6	17900*
120	30	60	67.9	145.4	26500*	70.6	145.1	23800*	72.9	142.9	16600*
120	30	70	63.7	140.9	25400*	66.3	140.6	22700*	68.6	138.4	15500*
120	30	80	59.3	135.4	24200*	62.0	135.2	21300*	64.1	132.8	14600*
120	30	90	54.8	128.9	23000*	57.4	128.7	19500*	59.4	126.2	13900*
120	30	100	50.0	121.2	21600*	52.5	121.0	17500*	54.5	118.3	13200*
120	30	110	44.8	112.0	19500*	47.3	111.7	15900*	49.0	108.7	12700*
120	30	120	39.0	100.8	17200*	41.5	100.5	15500*			
120	30	130	32.5	86.9	15300	34.8	86.4	15000*			
120	30	140	24.5	68.4	13500						
120	40	35	78.6	163.2	25000*						
120	40	40	76.8	162.1	24600*						
120	40	50	73.1	159.3	23600*	76.6	158.7	20800*	79.7	155.9	14600*
120	40	60	69.3	155.8	22600*	72.8	155.3	19400*	75.8	152.4	13600*
120	40	70	65.4	151.6	21400*	68.8	151.1	18100*	71.8	148.2	12700*
120	40	80	61.4	146.5	20000*	64.8	146.1	16600*	67.7	143.0	11900*
120	40	90	57.3	140.5	18500*	60.6	140.1	15300*	63.4	136.9	11300*
120	40	100	52.9	133.4	16900*	56.2	133.1	13900*	58.8	129.7	10800*
120	40	110	48.3	125.1	15500*	51.5	124.8	12500*	54.0	121.2	10300*
120	40	120	43.3	115.3	13900*	46.5	114.9	11600*			
120	40	130	37.8	103.5	12200*	40.9	103.0	10900*			
120	40	140	31.4	88.9	11300*						
120	40	150	23.7	69.7	10400*						
120	50	35	79.3	173.3	21800*						
120	50	40	77.6	172.3	21300*						
120	50	50	74.1	169.7	20400*	78.3	169.0	17900*			
120	50	60	70.6	166.4	19500*	74.7	165.8	16500*	78.4	162.5	11700*
120	50	70	67.0	162.4	18600*	71.0	161.9	15000*	74.7	158.5	10900*
120	50	80	63.3	157.7	17000*	67.3	157.2	13400*	70.8	153.7	10200*
120	50	90	59.4	152.1	15400*	63.4	151.7	12000*	66.8	148.1	9200*
120	50	100	55.4	145.6	13800*	59.4	145.3	11000*	62.7	141.5	8400*
120	50	110	51.2	138.1	12200*	55.1	137.8	9900*	58.3	133.7	7900*
120	50	120	46.7	129.3	11000*	50.6	129.0	8800*	53.6	124.6	7400*

BOOM LGTH	JIB LGTH	LOAD RAD	JIB, ANGLE TO BOOM								
			0°			15°			30°		
			BOOM ANGLE	JIB POINT HEIGHT	CAPACITY	BOOM ANGLE	JIB POINT HEIGHT	CAPACITY	BOOM ANGLE	JIB POINT HEIGHT	CAPACITY
120	50	130	41.9	119.0	9800*	45.7	118.6	8100*			
120	50	140	36.6	106.6	8500*	40.3	106.2	7500*			
120	50	150	30.5	91.4	7900*						
120	50	160	23.0	71.5	7100*						
120	60	35	79.9	183.6	19600*						
120	60	40	78.3	182.6	19200*						
120	60	50	75.0	180.2	18300*	79.8	179.6	16200*			
120	60	60	71.7	177.1	17400*	76.4	176.6	14700*			
120	60	70	68.3	173.4	16500*	73.0	173.0	13200*	77.2	169.2	8700*
120	60	80	64.8	169.0	15300*	69.5	168.7	11500*	73.6	164.8	8000*
120	60	90	61.3	163.9	13700*	65.9	163.6	9800*	69.9	159.6	7300*
120	60	100	57.6	157.9	11900*	62.1	157.7	8600*	66.1	153.5	6500*
120	60	110	53.7	151.0	10100*	58.2	150.8	7800*	62.0	146.4	5900*
120	60	120	49.7	143.0	8600*	54.1	142.9	7000*	57.8	138.2	5600*
120	60	130	45.3	133.8	7800*	49.8	133.6	6100*	53.2	128.6	5300*
120	60	140	40.7	123.0	6800*	45.0	122.8	5700*			
120	60	150	35.5	110.2	5900*	39.8	109.8	5300*			
120	60	160	29.6	94.5	5500*						
120	60	170	22.3	73.9	5000*						
130	30	35	78.6	163.4	29400*						
130	30	40	76.8	162.3	28900*	79.4	161.9	26200*			
130	30	50	73.1	159.6	27900*	75.6	159.2	25200*	77.9	157.1	18200*
130	30	60	69.3	156.2	26900*	71.8	155.8	24100*	74.1	153.6	16900*
130	30	70	65.4	152.0	25800*	67.9	151.7	23100*	70.1	149.4	15900*
130	30	80	61.4	147.0	24800*	63.9	146.7	22000*	66.0	144.3	15000*
130	30	90	57.3	141.0	23700*	59.7	140.8	20400*	61.7	138.3	14200*
130	30	100	52.9	134.0	22500*	55.3	133.8	18600*	57.2	131.2	13500*
130	30	110	48.3	125.8	19600	50.6	125.5	16800*	52.4	122.7	13000*
130	30	120	43.3	116.0	17300	45.6	115.7	15700*			
130	30	130	37.8	104.3	15100	40.0	103.9	15300			
130	30	140	31.4	89.8	13300						
130	30	150	23.7	70.6	11800						
130	40	35	79.3	173.4	25200*						
130	40	40	77.6	172.3	24800*						
130	40	50	74.1	169.7	23800*	77.4	169.1	21100*			

BOOM LGTH	JIB LGTH	LOAD RAD	JIB ANGLE TO BOOM								
			0°			15°			30°		
			BOOM ANGLE	JIB POINT HEIGHT	CAPACITY	BOOM ANGLE	JIB POINT HEIGHT	CAPACITY	BOOM ANGLE	JIB POINT HEIGHT	CAPACITY
130	40	60	70.6	166.5	22900*	73.8	165.9	19800*	76.7	163.0	13800*
130	40	70	67.0	162.5	21900*	70.2	162.0	18500*	73.0	159.1	12900*
130	40	80	63.3	157.8	20600*	66.4	157.4	17200*	69.2	154.3	12200*
130	40	90	59.4	152.3	19200*	62.6	151.9	15900*	65.2	148.7	11500*
130	40	100	55.4	145.8	17800*	58.5	145.4	14700*	61.1	142.1	11000*
130	40	110	51.2	138.2	16400*	54.3	137.9	13300*	56.7	134.4	10500*
130	40	120	46.7	129.5	15000*	49.8	129.1	11900*	52.0	125.3	10100*
130	40	130	41.9	119.2	13500*	44.9	118.8	11400*			
130	40	140	36.6	106.8	11900*	39.5	106.3	10800*			
130	40	150	30.5	91.7	11200*						
130	40	160	23.0	71.7	10400*						

130	50	35	79.9	183.5	21900*						
130	50	40	78.3	182.5	21500*						
130	50	50	75.0	180.1	20700*	78.9	179.4	18200*			
130	50	60	71.7	177.0	19800*	75.6	176.4	16800*	79.1	172.9	11900*
130	50	70	68.3	173.3	18900*	72.2	172.7	15400*	75.6	169.2	11100*
130	50	80	64.8	168.8	17700*	68.7	168.4	14000*	72.0	164.8	10400*
130	50	90	61.3	163.7	16200*	65.1	163.2	12500*	68.3	159.6	9600*
130	50	100	57.6	157.7	14700*	61.3	157.3	11500*	64.5	153.5	8600*
130	50	110	53.7	150.7	13100*	57.4	150.4	10500*	60.5	146.4	8200*
130	50	120	49.7	142.8	11800*	53.3	142.4	9500*	56.2	138.1	7700*
130	50	130	45.3	133.5	10700*	49.0	133.2	8500*	51.7	128.5	7200*
130	50	140	40.7	122.7	9500*	44.2	122.3	8000*			
130	50	150	35.5	109.9	8400*	39.0	109.3	7400*			
130	50	160	29.6	94.1	7800*						
130	50	170	22.3	73.5	7000*						

130	60	40	78.9	192.8	19300*						
130	60	50	75.8	190.5	18500*						
130	60	60	72.7	187.7	17700*	77.2	187.1	15100*			
130	60	70	69.5	184.2	16800*	73.9	183.7	13600*	78.0	179.8	8900*
130	60	80	66.3	180.0	15900*	70.7	179.6	12100*	74.6	175.7	8200*
130	60	90	62.9	175.2	14400*	67.3	174.9	10500*	71.1	170.8	7500*
130	60	100	59.5	169.7	12800*	63.8	169.4	8900*	67.5	165.2	6800*
130	60	110	55.9	163.3	11200*	60.2	163.0	8200*	63.8	158.7	6000*
130	60	120	52.2	156.0	9400*	56.4	155.7	7400*	59.9	151.1	5700*
130	60	130	48.3	147.6	8400*	52.5	147.4	6600*	55.8	142.4	5400*

BOOM LGTH	JIB LGTH	LOAD RAD	JIB ANGLE TO BOOM								
			0°			15°			30°		
			BOOM ANGLE	JIB POINT HEIGHT	CAPACITY	BOOM ANGLE	JIB POINT HEIGHT	CAPACITY	BOOM ANGLE	JIB POINT HEIGHT	CAPACITY
130	60	140	44.1	137.9	7500*	48.2	137.7	5900*	51.4	132.3	5200*
130	60	150	39.6	126.7	6600*	43.6	126.3	5600*			
130	60	160	34.5	113.4	5800*	38.5	112.9	5300*			
130	60	170	28.8	97.1	5500*						
130	60	180	21.7	75.8	5000*						
140	30	35	79.3	173.6	29500*						
140	30	40	77.6	172.6	29100*						
140	30	50	74.1	170.0	28200*	76.5	169.6	25400*	78.7	167.5	18800*
140	30	60	70.6	166.8	27200*	73.0	166.5	24400*	75.1	164.3	17200*
140	30	70	67.0	162.9	26300*	69.3	162.6	23500*	71.4	160.3	16200*
140	30	80	63.3	158.3	25300*	65.6	158.0	22500*	67.6	155.6	15300*
140	30	90	59.4	152.8	24200*	61.7	152.5	21200*	63.6	150.1	14500*
140	30	100	55.4	146.3	22500	57.7	146.1	19600*	59.5	143.5	13900*
140	30	110	51.2	138.9	19400	53.5	138.6	17900*	55.2	135.9	13300*
140	30	120	46.7	130.2	17000	49.0	129.9	16100*	50.6	126.9	12800*
140	30	130	41.9	119.9	14900	44.1	119.6	15100			
140	30	140	36.6	107.6	13100	38.7	107.2	13300			
140	30	150	30.5	92.5	11600						
140	30	160	23.0	72.6	10200						
140	40	35	79.9	183.6	25400*						
140	40	40	78.3	182.6	24900*						
140	40	50	75.0	180.1	24100*	78.1	179.5	21300*			
140	40	60	71.7	177.1	23200*	74.8	176.5	20200*	77.5	173.6	14000*
140	40	70	68.3	173.4	22300*	71.4	172.8	18900*	74.0	169.9	13100*
140	40	80	64.8	169.0	21200*	67.9	168.5	17700*	70.5	165.4	12400*
140	40	90	61.3	163.8	19900*	64.3	163.4	16500*	66.8	160.2	11800*
140	40	100	57.6	157.8	18600*	60.5	157.4	15300*	63.0	154.1	11200*
140	40	110	53.7	150.9	17200*	56.7	150.5	14100*	59.0	147.1	10700*
140	40	120	49.7	142.9	15900*	52.6	142.6	12800*	54.8	138.9	10300*
140	40	130	45.3	133.7	14500*	48.2	133.3	11800*	50.3	129.4	9800*
140	40	140	40.7	122.9	13100*	43.5	122.5	11200*			
140	40	150	35.5	110.1	11800*	38.2	109.5	10600*			
140	40	160	29.6	94.3	10400						
140	40	170	22.3	73.7	9300						
140	50	40	78.9	192.7	21700*						

BOOM LGTH	JIB LGTH	LOAD RAD	JIB ANGLE TO BOOM								
			0°			15°			30°		
			BOOM ANGLE	JIB POINT HEIGHT	CAPACITY	BOOM ANGLE	JIB POINT HEIGHT	CAPACITY	BOOM ANGLE	JIB POINT HEIGHT	CAPACITY
140	50	50	75.8	190.4	20900*	79.5	189.7	18500*			
140	50	60	72.7	187.5	20000*	76.4	186.8	17200*	79.7	183.4	12000*
140	50	70	69.5	184.0	19200*	73.2	183.4	15800*	76.4	179.9	11300*
140	50	80	66.3	179.9	18300*	69.9	179.3	14500*	73.1	175.7	10600*
140	50	90	62.9	175.0	16800*	66.5	174.5	13100*	69.6	170.9	9900*
140	50	100	59.5	169.4	15500*	63.0	169.0	11900*	66.1	165.2	9000*
140	50	110	55.9	163.0	14000*	59.4	162.6	11000*	62.4	158.7	8400*
140	50	120	52.2	155.7	12400*	55.7	155.3	10100*	58.5	151.1	7900*
140	50	130	48.3	147.3	11400*	51.7	146.9	9100*	54.4	142.4	7300*
140	50	140	44.1	137.6	10400*	47.5	137.2	8300*	50.0	132.4	6400*
140	50	150	39.6	126.3	9200*	42.9	125.9	7800*			
140	50	160	34.5	113.0	8300*	37.8	112.4	7300*			
140	50	170	28.8	96.7	7700*						
140	60	40	79.5	203.0	19500*						
140	60	50	76.6	200.9	18700*						
140	60	60	73.6	198.1	17900*	77.8	197.5	15400*			
140	60	70	70.6	194.8	17100*	74.8	194.3	14000*	78.6	190.4	9100*
140	60	80	67.5	190.9	16100*	71.7	190.5	12600*	75.4	186.5	840
140	60	90	64.4	186.4	14700*	68.5	186.0	11100*	72.2	181.9	7700*
140	60	100	61.2	181.2	13400*	65.3	180.8	9600*	68.9	176.7	7000*
140	60	110	57.8	175.3	12000*	61.9	174.9	8500*	65.4	170.6	6400*
140	60	120	54.4	168.5	10400*	58.4	168.2	7800*	61.8	163.6	5800*
140	60	130	50.8	160.8	8900*	54.8	160.5	7100*	58.0	155.7	5600*
140	60	140	47.0	152.0	8100*	50.9	151.7	6300*	54.0	146.5	5000*
140	60	150	42.9	141.9	7300*	46.8	141.6	5800*	49.7	136.0	4400*
140	60	160	38.5	130.2	6400*	42.3	129.8	5500*			
140	60	170	33.6	116.4	5800*	37.4	115.8	5200*			
140	60	180	28.1	99.6	5400*						
150	30	35	79.9	183.8	29700*						
150	30	40	78.3	182.8	29300*						
150	30	50	75.0	180.4	28400*	77.3	180.0	25600*	79.3	177.8	19000*
150	30	60	71.7	177.4	27500*	74.0	177.0	24700*	75.9	174.8	17500*
150	30	70	68.3	173.7	26600*	70.6	173.4	23800*	72.5	171.1	16500*
150	30	80	64.8	169.4	25700*	67.1	169.1	22900*	68.9	166.8	15600*
150	30	90	61.3	164.3	24700*	63.5	164.0	21900*	65.3	161.6	14800*
150	30	100	57.6	158.4	22200	59.8	158.1	20400*	61.5	155.6	14100*
150	30	110	53.7	151.5	19100	55.9	151.2	18900*	57.5	148.6	13600*

BOOM LGTH	JIB LGTH	LOAD RAD	JIB ANGLE TO BOOM								
			0°			15°			30°		
			BOOM ANGLE	JIB POINT HEIGHT	CAPACITY	BOOM ANGLE	JIB POINT HEIGHT	CAPACITY	BOOM ANGLE	JIB POINT HEIGHT	CAPACITY
150	30	120	49.7	143.6	16800	51.8	143.3	17100	53.4	140.5	13100*
150	30	130	45.3	134.4	14700	47.4	134.1	14900	48.9	131.0	11800*
150	30	140	40.7	123.7	12900	42.7	123.3	13100			
150	30	150	35.5	110.9	11300	37.5	110.4	11500			
150	30	160	29.6	95.2	10000						
150	30	170	22.3	74.6	8800						
150	40	40	78.9	192.8	25100*						
150	40	50	75.8	190.5	24300*	78.8	189.8	21600*			
150	40	60	72.7	187.6	23500*	75.6	187.0	20500*	78.2	184.0	14200*
150	40	70	69.5	184.1	22600*	72.4	183.5	19300*	74.9	180.5	13300*
150	40	80	66.3	180.0	21700*	69.1	179.5	18200*	71.6	176.4	12600*
150	40	90	62.9	175.1	20500*	65.8	174.7	17000*	68.2	171.5	12000*
150	40	100	59.5	169.6	19300*	62.3	169.1	15800*	64.6	165.9	11400*
150	40	110	55.9	163.2	17200*	58.7	162.8	14700*	60.9	159.4	11000*
150	40	120	52.2	155.9	16100*	54.9	155.5	13500*	57.1	151.9	10200*
150	40	130	48.3	147.5	14900	51.0	147.1	12300*	53.0	143.3	8900*
150	40	140	44.1	137.8	13100	46.8	137.4	11600*			
150	40	150	39.6	126.5	11500	42.2	126.1	10700*			
150	40	160	34.5	113.2	10200	37.1	112.6	9800*			
150	40	170	28.8	96.9	9000						
150	50	40	79.5	202.9	21800*						
150	50	50	76.6	200.7	21000*						
150	50	60	73.6	198.0	20300*	77.1	197.3	17500*			
150	50	70	70.6	194.7	19500*	74.1	194.0	16200*	77.2	190.5	11400*
150	50	80	67.5	190.8	18700*	71.0	190.2	14900*	74.0	186.6	10700*
150	50	90	64.4	186.2	16900*	67.8	185.7	13600*	70.8	182.0	10200*
150	50	100	61.2	181.0	15600*	64.6	180.5	12300*	67.4	176.7	9400*
150	50	110	57.8	175.0	14500*	61.2	174.6	11500*	64.0	170.6	8500*
150	50	120	54.4	168.2	13400*	57.7	167.8	10600*	60.4	163.7	7800*
150	50	130	50.8	160.5	12000*	54.1	160.1	9600*	56.7	155.7	6800*
150	50	140	47.0	151.7	11100*	50.2	151.3	8700*	52.7	146.6	6000*
150	50	150	42.9	141.6	10100*	46.1	141.1	8200*			
150	50	160	38.5	129.9	8900*	41.7	129.3	7700*			
150	50	170	33.6	116.0	8200*	36.7	115.4	7200*			
150	50	180	28.1	99.2	7600*						

BOOM LGTH	JIB LGTH	LOAD RAD	JIB ANGLE TO BOOM								
			0°			15°			30°		
			BOOM ANGLE	JIB POINT HEIGHT	CAPACITY	BOOM ANGLE	JIB POINT HEIGHT	CAPACITY	BOOM ANGLE	JIB POINT HEIGHT	CAPACITY
150	60	40	80.0	213.2	19600*						
150	60	50	77.2	211.1	18900*						
150	60	60	74.4	208.5	18100*	78.4	207.8	15700*			
150	60	70	71.5	205.4	17400*	75.6	204.8	14400*	79.2	200.9	9300*
150	60	80	68.6	201.7	16100*	72.6	201.2	13000*	76.2	197.2	8500*
150	60	90	65.7	197.5	14700*	69.6	197.0	11600*	73.1	192.9	7900*
150	60	100	62.6	192.6	13500*	66.6	192.2	10200*	70.0	187.9	7300*
150	60	110	59.5	187.0	12500*	63.4	186.6	8800*	66.8	182.3	6600*
150	60	120	56.3	180.7	11300*	60.2	180.3	8200*	63.4	175.8	6000*
150	60	130	53.0	173.5	9800*	56.8	173.2	7500*	59.9	168.5	5300*
150	60	140	49.5	165.4	8600*	53.3	165.1	6800*	56.3	160.1	4700*
150	60	150	45.8	156.2	7900*	49.5	155.9	6100*	52.4	150.5	4100*
150	60	160	41.8	145.7	7100*	45.5	145.4	5700*			
150	60	170	37.5	133.6	6200*	41.2	133.2	5400*			
150	60	180	32.8	119.4	5700*	36.3	118.7	5100*			
150	60	190	27.4	102.1	5400*						

160	30	40	78.9	193.0	29400*						
160	30	50	75.8	190.7	28600*	78.0	190.3	25800*	79.9	188.1	19300*
160	30	60	72.7	187.9	27800*	74.8	187.5	24900*	76.7	185.3	17700*
160	30	70	69.5	184.5	26900*	71.6	184.1	24100*	73.5	181.8	16700*
160	30	80	66.3	180.4	26100*	68.4	180.0	23200*	70.2	177.7	15800*
160	30	90	62.9	175.6	24600*	65.0	175.3	22300*	66.7	172.9	15100*
160	30	100	59.5	170.1	22000	61.5	169.8	20300*	63.2	167.3	14400*
160	30	110	55.9	163.7	18900	58.0	163.5	17100*	59.6	160.9	13600*
160	30	120	52.2	156.5	16500	54.2	156.2	15300*	55.7	153.5	12000*
160	30	130	48.3	148.1	14400	50.2	147.8	13800*	51.7	144.9	10700*
160	30	140	44.1	138.5	12600	46.0	138.2	12500*			
160	30	150	39.6	127.3	11100	41.5	126.9	11100*			
160	30	160	34.5	114.0	9800	36.4	113.5	9900			
160	30	170	28.8	97.8	8600						
160	30	180	21.7	76.6	7500						

160	40	40	79.5	203.0	25300*						
160	40	50	76.6	200.8	24500*	79.3	200.1	21800*			
160	40	60	73.6	198.1	23700*	76.4	197.4	20700*	78.8	194.4	14300*
160	40	70	70.6	194.8	22900*	73.3	194.2	19600*	75.8	191.2	13500*
160	40	80	67.5	190.9	22100*	70.2	190.3	18600*	72.6	187.2	12800*

BOOM LGTH	JIB LGTH	LOAD RAD	JIB ANGLE TO BOOM								
			0°			15°			30°		
			BOOM ANGLE	JIB POINT HEIGHT	CAPACITY	BOOM ANGLE	JIB POINT HEIGHT	CAPACITY	BOOM ANGLE	JIB POINT HEIGHT	CAPACITY
160	40	90	64.4	186.3	21000*	67.1	185.8	17400*	69.4	182.7	12200*
160	40	100	61.2	181.1	19500*	63.8	180.7	16300*	66.1	177.4	11600*
160	40	110	57.8	175.2	17200*	60.5	174.7	14800*	62.7	171.4	10700*
160	40	120	54.4	168.4	15400*	57.0	168.0	13400*	59.1	164.5	9300*
160	40	130	50.8	160.6	13900*	53.4	160.2	11900*	55.4	156.6	8300*
160	40	140	47.0	151.8	12400*	49.5	151.4	10700*	51.4	147.5	7300*
160	40	150	42.9	141.8	11300	45.4	141.3	9600*			
160	40	160	38.5	130.1	10000	41.0	129.5	8600*			
160	40	170	33.6	116.3	8800	36.0	115.6	7800*			
160	40	180	28.1	99.5	7700						
160	50	40	80.0	213.1	21900*						
160	50	50	77.2	211.0	21200*						
160	50	60	74.4	208.4	20500*	77.7	207.7	17700*			
160	50	70	71.5	205.3	19700*	74.9	204.6	16500*	77.8	201.0	11500*
160	50	80	68.6	201.6	19000*	71.9	201.0	15300*	74.8	197.3	10900*
160	50	90	65.7	197.3	16900*	68.9	196.7	14100*	71.8	193.0	10300*
160	50	100	62.6	192.4	15600*	65.9	191.8	12800*	68.7	188.0	9600*
160	50	110	59.5	186.8	14500*	62.8	186.3	11800*	65.5	182.3	8300*
160	50	120	56.3	180.4	13500*	59.5	180.0	11000*	62.1	175.9	7300*
160	50	130	53.0	173.2	12500*	56.1	172.8	10200*	58.6	168.5	6400*
160	50	140	49.5	165.1	11300*	52.6	164.7	9000*	55.0	160.2	5600*
160	50	150	45.8	155.9	10200*	48.9	155.5	8100*	51.1	150.7	5000*
160	50	160	41.8	145.4	9100*	44.9	144.9	7300*			
160	50	170	37.5	133.3	8400*	40.5	132.7	6600*			
160	50	180	32.8	119.0	7700*	35.7	118.3	5900*			
160	50	190	27.4	101.7	7000						
160	60	50	77.8	221.4	19000*						
160	60	60	75.1	218.9	18300*	79.0	218.2	15900*			
160	60	70	72.4	216.0	17600*	76.2	215.3	14700*	79.7	211.3	9600*
160	60	80	69.7	212.5	16200*	73.5	211.9	13400*	76.9	207.8	8700*
160	60	90	66.8	208.4	14700*	70.6	207.9	12100*	74.0	203.7	8100*
160	60	100	64.0	203.8	13600*	67.8	203.3	10700*	71.0	199.1	7500*
160	60	110	61.0	198.5	12500*	64.8	198.1	9300*	68.0	193.8	6600*
160	60	120	58.0	192.6	11500*	61.7	192.2	8500*	64.9	187.7	5700*
160	60	130	54.9	185.9	10700*	58.6	185.6	7900*	61.6	180.9	5000*
160	60	140	51.7	178.4	9200*	55.3	178.1	7200*	58.2	173.1	4400*

BOOM LGTH	JIB LGTH	LOAD RAD	JIB ANGLE TO BOOM								
			0°			15°			30°		
			BOOM ANGLE	JIB POINT HEIGHT	CAPACITY	BOOM ANGLE	JIB POINT HEIGHT	CAPACITY	BOOM ANGLE	JIB POINT HEIGHT	CAPACITY
160	60	150	48.2	169.9	8400*	51.9	169.6	6500*	54.7	164.4	3800*
160	60	160	44.7	160.4	7600*	48.2	160.0	5900*	50.9	154.4	3400*
160	60	170	40.8	149.5	6900*	44.3	149.1	5500*			
160	60	180	36.7	137.0	6000*	40.1	136.4	5000*			
160	60	190	32.0	122.3	5700*	35.4	121.5	4500*			
160	60	200	26.7	104.5	5300*						
170	30	40	79.5	203.2	29600*						
170	30	50	76.6	201.0	28800*	78.6	200.6	25900*			
170	30	60	73.6	198.4	28000*	75.6	197.9	25200*	77.4	195.7	18000*
170	30	70	70.6	195.1	27200*	72.6	194.7	24300*	74.4	192.5	17000*
170	30	80	67.5	191.3	24700*	69.5	190.9	23100*	71.2	188.6	16100*
170	30	90	64.4	186.8	21700*	66.4	186.5	20400*	68.0	184.1	15300*
170	30	100	61.2	181.6	19300*	63.1	181.3	17200*	64.7	178.9	14200*
170	30	110	57.8	175.7	16500*	59.8	175.4	15300*	61.3	172.9	12500*
170	30	120	54.4	169.0	14700*	56.3	168.7	13500*	57.8	166.0	10900*
170	30	130	50.8	161.3	13300*	52.7	161.0	12200*	54.1	158.2	9600*
170	30	140	47.0	152.5	12000*	48.8	152.2	10800*	50.2	149.2	8600*
170	30	150	42.9	142.5	10800	44.8	142.1	9800*			
170	30	160	38.5	130.8	9500	40.3	130.4	8900*			
170	30	170	33.6	117.1	8300	35.4	116.6	8100*			
170	30	180	28.1	100.3	7300						
170	30	190	21.2	78.5	6300						
170	40	40	80.0	213.2	25400*						
170	40	50	77.2	211.1	24700*	79.9	210.4	22000*			
170	40	60	74.4	208.5	23900*	77.0	207.8	21000*	79.4	204.8	14500*
170	40	70	71.5	205.4	23100*	74.2	204.7	19900*	76.5	201.7	13700*
170	40	80	68.6	201.7	22400*	71.2	201.1	18900*	73.5	198.0	13000*
170	40	90	65.7	197.4	20000*	68.3	196.9	17100*	70.5	193.7	12400*
170	40	100	62.6	192.5	16900*	65.2	192.0	15300*	67.4	188.8	11200*
170	40	110	59.5	186.9	15100*	62.1	186.4	13400*	64.2	183.1	9800*
170	40	120	56.3	180.6	13600*	58.8	180.1	11900*	60.8	176.7	8600*
170	40	130	53.0	173.4	12100*	55.5	173.0	10600*	57.4	169.4	7600*
170	40	140	49.5	165.3	10900*	51.9	164.9	9500*	53.8	161.1	6700*
170	40	150	45.8	156.1	9800*	48.2	155.7	8500*	49.9	151.6	5900*
170	40	160	41.8	145.6	8900*	44.2	145.1	7600*			
170	40	170	37.5	133.5	8100*	39.9	132.9	6900*			

BOOM LGTH	JIB LGTH	LOAD RAD	JIB ANGLE TO BOOM								
			0°			15°			30°		
			BOOM ANGLE	JIB POINT HEIGHT	CAPACITY	BOOM ANGLE	JIB POINT HEIGHT	CAPACITY	BOOM ANGLE	JIB POINT HEIGHT	CAPACITY
170	40	180	32.8	119.2	7500	35.1	118.5	6200*			
170	40	190	27.4	101.9	6500						
170	50	50	77.8	221.3	21400*						
170	50	60	75.1	218.8	20700*	78.3	218.0	18000*			
170	50	70	72.4	215.8	20000*	75.6	215.1	16800*	78.4	211.5	11700*
170	50	80	69.7	212.3	19200*	72.8	211.6	15700*	75.6	208.0	11000*
170	50	90	66.8	208.2	16800*	70.0	207.6	14500*	72.7	203.9	10500*
170	50	100	64.0	203.6	15500*	67.1	203.0	13300*	69.8	199.2	9000*
170	50	110	61.0	198.3	13900*	64.1	197.8	11700*	66.7	193.9	7900*
170	50	120	58.0	192.4	12400*	61.1	191.9	10300*	63.6	187.8	6800*
170	50	130	54.9	185.7	11000*	57.9	185.2	9100*	60.4	181.0	5900*
170	50	140	51.7	178.1	9900*	54.7	177.7	8200*	57.0	173.3	5200*
170	50	150	48.2	169.6	9000*	51.2	169.2	7300*	53.5	164.5	4500*
170	50	160	44.7	160.1	8100*	47.6	159.6	6500*	49.7	154.6	4000*
170	50	170	40.8	149.2	7300*	43.7	148.6	5800*			
170	50	180	36.7	136.6	6600*	39.5	136.0	5200*			
170	50	190	32.0	121.9	6000*	34.8	121.1	4800*			
170	50	200	26.7	104.1	5600*						
170	60	50	78.3	231.6	19200*						
170	60	60	75.8	229.3	18500*	79.5	228.5	16100*			
170	60	70	73.2	226.4	17600*	76.9	225.7	15000*			
170	60	80	70.6	223.1	16100*	74.2	222.5	13700*	77.5	218.4	8800*
170	60	90	67.9	219.3	14700*	71.5	218.7	12500*	74.8	214.5	8200*
170	60	100	65.2	214.9	13500*	68.8	214.4	11200*	72.0	210.1	7200*
170	60	110	62.4	209.9	12400*	66.0	209.5	9900*	69.1	205.1	6200*
170	60	120	59.6	204.3	11100*	63.1	203.9	8800*	66.1	199.4	5400*
170	60	130	56.6	198.0	9900*	60.2	197.7	7800*	63.1	193.0	4700*
170	60	140	53.6	191.0	8900*	57.1	190.7	7000*	59.9	185.8	4100*
170	60	150	50.4	183.2	8000*	53.9	182.8	6200*	56.6	177.7	3600*
170	60	160	47.1	174.3	7200*	50.6	174.0	5600*	53.2	168.5	3200*
170	60	170	43.6	164.4	6500*	47.0	164.0	4900*	49.5	158.2	2800*
170	60	180	39.9	153.2	6000*	43.2	152.7	4500*			
170	60	190	35.8	140.2	5500*	39.1	139.6	4000*			
170	60	200	31.3	125.1	5000*	34.5	124.2	3700*			
170	60	210	26.1	106.8	4600*						

BOOM LGTH	JIB LGTH	LOAD RAD	JIB ANGLE TO BOOM								
			0°			15°			30°		
			BOOM ANGLE	JIB POINT HEIGHT	CAPACITY	BOOM ANGLE	JIB POINT HEIGHT	CAPACITY	BOOM ANGLE	JIB POINT HEIGHT	CAPACITY
180	30	40	80.0	213.4	29700*						
180	30	50	77.2	211.3	29000*	79.2	210.8	26100*			
180	30	60	74.4	208.8	28100*	76.3	208.3	25300*	78.1	206.1	18200*
180	30	70	71.5	205.7	24600*	73.5	205.3	23400*	75.2	203.0	17200*
180	30	80	68.6	202.0	21600*	70.6	201.7	20400*	72.2	199.4	16300*
180	30	90	65.7	197.8	19200*	67.6	197.5	17100*	69.2	195.1	14500*
180	30	100	62.6	193.0	16200*	64.5	192.6	15200*	66.1	190.2	12700*
180	30	110	59.5	187.4	14500*	61.4	187.1	13500*	62.9	184.6	11200*
180	30	120	56.3	181.1	13000*	58.2	180.8	12000*	59.6	178.2	9900*
180	30	130	53.0	174.0	11700*	54.8	173.7	10600*	56.2	171.0	8800*
180	30	140	49.5	165.9	10400*	51.3	165.7	9700*	52.6	162.7	7800*
180	30	150	45.8	156.8	9400*	47.5	156.5	8600*	48.8	153.4	7000*
180	30	160	41.8	146.3	8500*	43.6	146.0	7800*			
180	30	170	37.5	134.3	7800*	39.3	133.8	7100*			
180	30	180	32.8	120.1	7000	34.5	119.5	6500*			
180	30	190	27.4	102.8	6100						
180	40	50	77.8	221.3	24800*						
180	40	60	75.1	218.9	24100*	77.6	218.2	21200*	79.9	215.1	14600*
180	40	70	72.4	215.9	22800*	74.9	215.3	20200*	77.1	212.2	13800*
180	40	80	69.7	212.4	20000*	72.1	211.8	17500*	74.3	208.7	13100*
180	40	90	66.8	208.3	16800*	69.3	207.8	15300*	71.4	204.6	12000*
180	40	100	64.0	203.7	15000*	66.4	203.2	13500*	68.5	200.0	10400*
180	40	110	61.0	198.4	13400*	63.5	198.0	12000*	65.5	194.6	9100*
180	40	120	58.0	192.5	11800*	60.4	192.0	10600*	62.4	188.6	7900*
180	40	130	54.9	185.8	10700*	57.3	185.4	9500*	59.2	181.8	6900*
180	40	140	51.7	178.3	9500*	54.0	177.9	8500*	55.8	174.1	6100*
180	40	150	48.2	169.8	8700*	50.6	169.4	7600*	52.3	165.4	5400*
180	40	160	44.7	160.3	7700*	47.0	159.8	6800*			
180	40	170	40.8	149.4	7000*	43.1	148.9	6100*			
180	40	180	36.7	136.8	6400*	38.9	136.2	5500*			
180	40	190	32.0	122.1	5900*						
180	40	200	26.7	104.3	5500						
180	50	50	78.3	231.5	21500*						
180	50	60	75.8	229.1	20800*	78.8	228.3	18200*			
180	50	70	73.2	226.3	20200*	76.2	225.5	17100*	79.0	221.9	11800*
180	50	80	70.6	223.0	17500*	73.6	222.3	15700*	76.3	218.6	11200*

BOOM LGTH	JIB LGTH	LOAD RAD	JIB ANGLE TO BOOM								
			0°			15°			30°		
			BOOM ANGLE	JIB POINT HEIGHT	CAPACITY	BOOM ANGLE	JIB POINT HEIGHT	CAPACITY	BOOM ANGLE	JIB POINT HEIGHT	CAPACITY
180	50	90	67.9	219.1	15700*	70.9	218.5	13800*	73.5	214.7	9800*
180	50	100	65.2	214.7	13800*	68.2	214.1	12100*	70.7	210.3	8400*
180	50	110	62.4	209.7	12300*	65.4	209.2	10500*	67.9	205.2	7300*
180	50	120	59.6	204.1	10900*	62.5	203.6	9200*	65.0	199.5	6300*
180	50	130	56.6	197.8	9700*	59.5	197.3	8200*	61.9	193.1	5500*
180	50	140	53.6	190.7	8600*	56.5	190.3	7300*	58.8	185.9	4900*
180	50	150	50.4	182.9	7900*	53.3	182.4	6500*	55.5	177.8	4200*
180	50	160	47.1	174.0	7100*	49.9	173.6	5800*	52.0	168.7	3800*
180	50	170	43.6	164.1	6400*	46.4	163.6	5200*			
180	50	180	39.9	152.8	5800*	42.6	152.3	4700*			
180	50	190	35.8	139.9	5300*	38.5	139.2	4300*			
180	50	200	31.3	124.7	4900*						
180	50	210	26.1	106.4	4500*						
180	60	50	78.8	241.8	19300*						
180	60	60	76.4	239.6	18700*	79.9	238.8	16200*			
180	60	70	73.9	236.9	17400*	77.4	236.1	15200*			
190	60	80	71.4	233.7	16000*	74.9	233.0	13800*	78.1	228.9	8900*
180	60	90	68.9	230.0	14300*	72.4	229.4	12000*	75.5	225.2	8000*
180	60	100	66.3	225.9	12700*	69.8	225.3	10500*	72.8	221.0	6800*
180	60	110	63.7	221.2	11200*	67.1	220.6	9200*	70.1	216.3	5800*
180	60	120	61.0	215.9	9900*	64.4	215.4	8100*	67.3	210.9	5000*
180	60	130	58.2	209.9	8800*	61.6	209.5	7200*	64.4	204.9	4300*
180	60	140	55.3	203.3	7900*	58.7	202.9	6200*	61.5	198.1	3800*
180	60	150	52.4	196.0	7100*	55.7	195.6	5700*	58.4	190.6	3400*
180	60	160	49.3	187.8	6400*	52.6	187.4	5000*	55.2	182.1	3000*
180	60	170	46.1	178.6	5700*	49.3	178.2	4500*	51.8	172.6	2700*
180	60	180	42.7	168.4	5300*	45.9	167.9	4100*			
180	60	190	39.0	156.7	4700*	42.2	156.2	3700*			
180	60	200	35.0	143.4	4300*	38.1	142.7	3300*			
180	60	210	30.6	127.9	4000*						
180	60	220	25.6	109.1	3700*						
190	30	50	77.8	221.6	28300*	79.7	221.1	26200*			
190	30	60	75.1	219.1	24800*	77.0	218.7	23900*	78.6	216.4	18400*
190	30	70	72.4	216.2	21800*	74.2	215.8	21000*	75.9	213.5	17400*
190	30	80	69.7	212.8	19300*	71.5	212.4	17400*	73.1	210.1	15100*
190	30	90	66.8	208.7	16100*	68.7	208.4	15300*	70.2	206.0	13200*

BOOM LGTH	JIB LGTH	LOAD RAD	JIB ANGLE TO BOOM								
			0°			15°			30°		
			BOOM ANGLE	JIB POINT HEIGHT	CAPACITY	BOOM ANGLE	JIB POINT HEIGHT	CAPACITY	BOOM ANGLE	JIB POINT HEIGHT	CAPACITY
190	30	100	64.0	204.2	14300*	65.8	203.8	13500*	67.3	201.4	11500*
190	30	110	61.0	198.9	12800*	62.8	198.6	12000*	64.3	196.1	10100*
190	30	120	58.0	193.0	11500*	59.8	192.7	10700*	61.2	190.2	8900*
190	30	130	54.9	186.4	10200*	56.7	186.1	9600*	58.0	183.4	8000*
190	30	140	51.7	178.9	9200*	53.4	178.6	8500*	54.7	175.8	7000*
190	30	150	48.2	170.5	8300*	50.0	170.2	7600*	51.2	167.2	6200*
190	30	160	44.7	161.0	7500*	46.3	160.6	6900*			
190	30	170	40.8	150.1	6800*	42.5	149.7	6200*			
190	30	180	36.7	137.6	6200*	38.3	137.2	5600*			
190	30	190	32.0	123.0	5700*						
190	30	200	26.7	105.2	5000						
190	40	50	78.3	231.6	25000*						
190	40	60	75.8	229.2	23000*	78.2	228.5	21400*			
190	40	70	73.2	226.4	20100*	75.6	225.7	17800*	77.7	222.6	14000*
190	40	80	70.6	223.0	17000*	73.0	222.4	15600*	75.0	219.3	12800*
190	40	90	67.9	219.2	15000*	70.3	218.6	13900*	72.3	215.5	11100*
190	40	100	65.2	214.8	13400*	67.5	214.3	12100*	69.5	211.0	9600*
190	40	110	62.4	209.8	11800*	64.8	209.3	10700*	66.7	206.0	8200*
190	40	120	59.6	204.2	10500*	61.9	203.7	9400*	63.8	200.3	7300*
190	40	130	56.6	197.9	9400*	58.9	197.5	8400*	60.8	194.0	6300*
190	40	140	53.6	190.9	8400*	55.9	190.5	7500*	57.6	186.8	5600*
190	40	150	50.4	183.0	7500*	52.7	182.6	6700*	54.4	178.8	4900*
190	40	160	47.1	174.2	6800*	49.3	173.8	6000*	51.0	169.7	4400*
190	40	170	43.6	164.3	6200*	45.8	163.8	5400*			
190	40	180	39.9	153.0	5600*	42.0	152.5	4900*			
190	40	190	35.8	140.1	5100*	37.9	139.4	4400*			
190	40	200	31.3	125.0	4700*						
190	40	210	26.1	106.7	4300*						
190	50	50	78.8	241.7	21600*						
190	50	60	76.4	239.5	21000*	79.3	238.6	18400*			
190	50	70	73.9	236.7	17800*	76.8	236.0	16300*	79.4	232.3	11900*
190	50	80	71.4	233.6	15600*	74.3	232.8	14100*	76.9	229.1	10700*
190	50	90	68.9	229.9	13900*	71.8	229.2	12400*	74.3	225.4	9100*
190	50	100	66.3	225.7	12300*	69.2	225.1	10900*	71.6	221.2	7700*
190	50	110	63.7	220.9	10900*	66.5	220.4	9400*	68.9	216.4	6800*
190	50	120	61.0	215.6	9700*	63.8	215.1	8300*	66.1	211.1	5800*

BOOM LGTH	JIB LGTH	LOAD RAD	JIB ANGLE TO BOOM								
			0°			15°			30°		
			BOOM ANGLE	JIB POINT HEIGHT	CAPACITY	BOOM ANGLE	JIB POINT HEIGHT	CAPACITY	BOOM ANGLE	JIB POINT HEIGHT	CAPACITY
190	50	130	58.2	209.7	8600*	61.0	209.2	7400*	63.3	205.0	5000*
190	50	140	55.3	203.1	7700*	58.1	202.6	6500*	60.3	198.3	4500*
190	50	150	52.4	195.7	6900*	55.1	195.2	5800*	57.3	190.7	3900*
190	50	160	49.3	187.5	6100*	52.0	187.0	5200*	54.1	182.3	3500*
190	50	170	46.1	178.3	5600*	48.8	177.8	4700*	50.7	172.8	3100*
190	50	180	42.7	168.0	5000*	45.3	167.5	4200*			
190	50	190	39.0	156.4	4600*	41.6	155.8	3800*			
190	50	200	35.0	143.1	4200*	37.6	142.3	3400*			
190	50	210	30.6	127.5	3800*						
190	50	220	25.6	108.7	3600*						
190	60	50	79.3	252.0	19400*						
190	60	60	76.9	249.9	18800*						
190	60	70	74.6	247.3	16300*	78.0	246.5	14500*			
190	60	80	72.2	244.3	14500*	75.5	243.5	12700*	78.6	239.3	8800*
190	60	90	69.8	240.8	12700*	73.1	240.1	11000*	76.1	235.9	7500*
190	60	100	67.3	236.8	11300*	70.6	236.2	9500*	73.6	231.9	6300*
190	60	110	64.8	232.3	10000*	68.1	231.7	8300*	71.0	227.3	5400*
190	60	120	62.2	227.2	8800*	65.5	226.7	7300*	68.3	222.2	4600*
190	60	130	59.6	221.6	7900*	62.9	221.2	6400*	65.6	216.5	4000*
190	60	140	56.9	215.4	6900*	60.2	215.0	5700*	62.8	210.2	3500*
190	60	150	54.1	208.5	6200*	57.3	208.1	5100*	59.9	203.1	3100*
190	60	160	51.2	200.8	5600*	54.4	200.4	4500*	56.9	195.2	2700*
190	60	170	48.2	192.3	5000*	51.4	191.9	4000*	53.8	186.4	2400*
190	60	180	45.1	182.8	4600*	48.2	182.4	3600*	50.5	176.6	2200*
190	60	190	41.8	172.2	4100*	44.8	171.7	3300*			
190	60	200	38.2	160.2	3800*	41.2	159.6	3000*			
190	60	210	34.3	146.5	3500*	37.3	145.8	2700*			
190	60	220	30.0	130.6	3200*						
190	60	230	25.0	111.3	3000*						
200	30	50	78.3	231.8	25400*						
200	30	60	75.8	229.5	22100*	77.6	229.0	21600*	79.1	226.8	18100*
200	30	70	73.2	226.7	19600*	75.0	226.3	17800*	76.5	224.0	15700*
200	30	80	70.6	223.4	16300*	72.3	223.0	15500*	73.8	220.7	13700*
200	30	90	67.9	219.6	14400*	69.7	219.2	13800*	71.1	216.9	12000*
200	30	100	65.2	215.2	12800*	66.9	214.9	12100*	68.4	212.5	10500*
200	30	110	62.4	210.3	11300*	64.1	210.0	10600*	65.5	207.5	9100*
200	30	120	59.6	204.7	10100*	61.3	204.4	9500*	62.6	201.9	8000*

BOOM LGTH	JIB LGTH	LOAD RAD	JIB ANGLE TO BOOM								
			0°			15°			30°		
			BOOM ANGLE	JIB POINT HEIGHT	CAPACITY	BOOM ANGLE	JIB POINT HEIGHT	CAPACITY	BOOM ANGLE	JIB POINT HEIGHT	CAPACITY
200	30	130	56.6	198.5	9000*	58.3	198.2	8400*	59.6	195.5	7100*
200	30	140	53.6	191.5	8100*	55.3	191.2	7600*	56.5	188.4	6300*
200	30	150	50.4	183.7	7200*	52.1	183.4	6700*	53.3	180.5	5600*
200	30	160	47.1	174.9	6500*	48.8	174.6	6100*	49.9	171.5	5100*
200	30	170	43.6	165.0	6000*	45.2	164.7	5500*			
200	30	180	39.9	153.8	5500*	41.5	153.4	5000*			
200	30	190	35.8	140.9	5000*	37.4	140.4	4600*			
200	30	200	31.3	125.8	4500*						
200	30	210	26.1	107.5	4000						

200	40	50	78.8	241.8	23600*						
200	40	60	76.4	239.5	20700*	78.7	238.8	18400*			
200	40	70	73.9	236.8	17100*	76.2	236.1	16200*	78.3	233.0	13700*
200	40	80	71.4	233.6	15200*	73.7	233.0	14000*	75.7	229.9	11700*
200	40	90	68.9	230.0	13500*	71.1	229.4	12300*	73.1	226.2	10200*
200	40	100	66.3	225.8	11900*	68.6	225.2	10900*	70.5	222.0	8800*
200	40	110	63.7	221.1	10400*	65.9	220.5	9600*	67.8	217.2	7600*
200	40	120	61.0	215.8	9300*	63.2	215.3	8500*	65.0	211.9	6500*
200	40	130	58.2	209.8	8300*	60.4	209.4	7500*	62.2	205.9	5700*
200	40	140	55.3	203.2	7400*	57.5	202.8	6700*	59.3	199.2	5100
200	40	150	52.4	195.9	6600*	54.6	195.4	5900*	56.2	191.7	4500*
200	40	160	49.3	187.7	6000*	51.4	187.2	5300*	53.0	183.3	4000*
200	40	170	46.1	178.5	5300*	48.2	178.0	4800*	49.7	173.9	3500*
200	40	180	42.7	168.2	4800*	44.7	167.7	4300*			
200	40	190	39.0	156.6	4400*	41.1	156.0	3900*			
200	40	200	35.0	143.3	4100*	37.0	142.6	3600*			
200	40	210	30.6	127.7	3800*						
200	40	220	25.6	108.9	3500						

200	50	50	79.3	251.9	21800*						
200	50	60	76.9	249.8	18100*	79.7	248.9	16900*			
200	50	70	74.6	247.2	16000*	77.4	246.3	14700*	79.9	242.6	11600*
200	50	80	72.2	244.1	14100*	75.0	243.3	12700*	77.4	239.6	9800*
200	50	90	69.8	240.6	12300*	72.5	239.9	11200*	75.0	236.1	8400*
200	50	100	67.3	236.6	10900*	70.0	235.9	9700*	72.4	232.1	7300*
200	50	110	64.8	232.1	9600*	67.5	231.5	8600*	69.9	227.5	6200*
200	50	120	62.2	227.0	8500*	64.9	226.5	7500*	67.2	222.4	5300*
200	50	130	59.6	221.4	7500*	62.3	220.9	6600*	64.5	216.7	4700*
200	50	140	56.9	215.2	6700*	59.6	214.6	5900*	61.8	210.4	4100*

BOOM LGTH	JIB LGTH	LOAD RAD	JIB ANGLE TO BOOM								
			0°			15°			30°		
			BOOM ANGLE	JIB POINT HEIGHT	CAPACITY	BOOM ANGLE	JIB POINT HEIGHT	CAPACITY	BOOM ANGLE	JIB POINT HEIGHT	CAPACITY
200	50	150	54.1	208.2	6000*	56.8	207.7	5200*	58.9	203.3	3600*
200	50	160	51.2	200.5	5400*	53.9	200.0	4600*	55.9	195.4	3200*
200	50	170	48.2	192.0	4900*	50.8	191.5	4100*	52.8	186.7	2800*
200	50	180	45.1	182.5	4400*	47.7	182.0	3700*	49.5	176.8	2500*
200	50	190	41.8	171.9	4000*	44.3	171.3	3400*			
200	50	200	38.2	159.9	3700*	40.7	159.2	3100*			
200	50	210	34.3	146.2	3300*	36.7	145.4	2800*			
200	50	220	30.0	130.2	3100*						
200	50	230	25.0	110.9	2800*						
200	60	50	79.7	262.2	19600*						
200	60	60	77.4	260.1	16700*						
200	60	70	75.2	257.7	14800*	78.4	256.8	13400*			
200	60	80	72.9	254.7	13000*	76.1	254.0	11600*	79.0	249.8	8300*
200	60	90	70.6	251.4	11500*	73.8	250.7	10000*	76.7	246.4	7000*
200	60	100	68.2	247.6	10100*	71.4	247.0	8700*	74.2	242.6	5900*
200	60	110	65.8	243.3	8900*	69.0	242.7	7600*	71.8	238.3	5000*
200	60	120	63.4	238.5	7900*	66.6	238.0	6600*	69.3	233.5	4400*
200	60	130	60.9	233.2	6900*	64.0	232.7	5900*	66.7	228.1	3800*
200	60	140	58.3	227.3	6200*	61.5	226.8	5200*	64.1	222.0	3300*
200	60	150	55.7	220.7	5600*	58.8	220.3	4500*	61.3	215.4	2900*
200	60	160	53.0	213.5	5000*	56.1	213.1	4100*	58.5	208.0	2600*
200	60	170	50.2	205.5	4500*	53.2	205.1	3600*	55.6	199.8	2200*
200	60	180	47.2	196.7	4000*	50.3	196.3	3200*	52.5	190.6	2000*
200	60	190	44.2	186.9	3600*	47.2	186.4	2900*			
200	60	200	40.9	176.0	3300*	43.9	175.4	2600*			
200	60	210	37.4	163.6	3000*	40.3	163.0	2400*			
200	60	220	33.6	149.6	2800*	36.4	148.8	2200*			
200	60	230	29.4	133.2	2500*						
200	60	240	24.5	113.5	2400*						