



Link-Belt Speeder

DIVISION OF FMC CORPORATION



Cedar Rapids, Iowa • Woodstock, Ontario, Canada • Queretaro, Mexico • Milan, Italy

This machine as manufactured conforms with the requirements of: ANSI B30.5-1968 and, when equipped with suitable load and angle indicating devices, conforms with THE DEPARTMENT OF LABOR SAFETY AND HEALTH REGULATIONS as listed in the: FEDERAL REGISTER Vol. 36 Nos. 75 and 105 (OSHA)

HC-218 CRANE CAPACITIES — Hi-Lite Tubular Boom with Open Throat Top Section

CRF 15016 — Table A

Refer to all notes on next page

PCSA Class 12-426

Based on machine equipped with live boom mast (fully extended), 21,000# upper ctwt. "A", GM 6-71N diesel engine; mounted on std. L-BS 8x4 drive, 236" wheelbase carrier, 11' 0" wide, equipped with GM 8V-71N diesel engine 14:00 x 24-J (18-ply) rating tires, front and rear power hydraulic outriggers, four floats, and 10,800# bumper ctwt. "A".

BOOM				ON OUTRIGGERS		ON TIRES	
Length (Feet)	Radius (Feet)	Angle (Degree)	Point Height "W"	Rear	Side	Rear	Side
40'	12	77.7	45' 7"	164,000*	164,000*	119,800*	77,500*
	13	76.3	45' 4"	153,300*	153,000*	115,500*	72,200*
	14	74.8	45' 2"	143,500*	143,200*	104,700*	67,500*
	15	73.3	44' 11"	134,800*	134,600*	95,100*	63,400*
	20	65.6	43' 0"	103,200*	102,000*	64,700*	45,400*
	25	57.5	40' 4"	81,300*	80,200*	48,600*	33,500*
	30	48.5	36' 7"	65,800*	65,000*	38,500*	26,200*
	35	38.0	31' 4"	55,000*	51,800*	31,700*	21,200*
40	24.1	23' 0"	45,500*	42,300*	26,700*	17,600*	
50'	13	79.0	55' 8"	143,800*	143,800*	115,200*	72,200*
	14	77.9	55' 6"	140,400*	140,400*	105,000*	67,500*
	15	76.7	55' 4"	137,200*	136,500*	95,300*	63,300*
	20	70.7	53' 10"	103,200*	101,800*	64,900*	45,600*
	25	64.5	51' 8"	81,400*	80,300*	48,700*	33,700*
	30	58.0	49' 0"	65,900*	65,000*	38,600*	26,300*
	35	51.0	45' 5"	55,100*	52,000*	31,800*	21,400*
	40	43.1	40' 10"	47,200*	42,600*	26,800*	17,800*
45	33.9	34' 6"	41,000*	35,900*	23,000*	15,000*	
50	21.6	25' 0"	34,600*	30,800*	20,000*	12,900*	
60'	15	78.9	65' 6"	130,000*	130,000*	95,800*	63,500*
	20	74.0	64' 4"	103,300*	102,000*	65,200*	45,900*
	25	69.0	62' 7"	81,600*	80,500*	48,900*	33,900*
	30	63.8	60' 5"	66,100*	65,200*	38,800*	26,500*
	35	58.3	57' 8"	55,200*	52,300*	31,900*	21,500*
	40	52.5	54' 2"	47,300*	42,300*	26,900*	17,900*
	50	39.2	44' 6"	36,300*	31,800*	20,100*	13,000*
	60	19.7	26' 10"	29,000*	25,800*	15,700*	9,800*
70'	20	76.4	74' 7"	100,500*	100,500*	65,200*	45,900*
	25	72.1	73' 2"	81,500*	80,400*	48,900*	33,900*
	30	67.8	71' 5"	65,900*	65,100*	38,800*	26,500*
	35	63.3	69' 1"	55,100*	52,300*	31,900*	21,500*
	40	58.6	66' 4"	47,200*	42,300*	26,900*	17,800*
	50	48.4	58' 11"	36,200*	31,800*	20,100*	13,000*
	60	36.2	47' 11"	29,000*	25,800*	15,700*	9,800*
	70	18.2	28' 6"	23,900*	19,700*	12,600*	7,500*
80'	20	78.1	84' 11"	95,000*	95,000*	65,100*	45,900*
	25	74.4	83' 8"	81,300*	80,300*	48,800*	33,800*
	30	70.7	82' 1"	65,800*	65,000*	38,700*	26,400*
	35	66.8	80' 1"	55,000*	52,300*	31,800*	21,400*
	40	62.9	77' 10"	47,000*	42,300*	26,800*	17,700*
	50	54.4	71' 8"	36,100*	31,800*	20,000*	12,900*
	60	45.1	63' 2"	28,900*	23,800*	14,600*	9,700*
	70	33.8	51' 1"	23,800*	19,100*	12,500*	7,500*
80	17.0	30' 0"	20,000*	15,600*	10,200*	5,800*	
90'	20	79.4	95' 1"	90,000*	90,000*	65,000*	45,800*
	25	76.2	94' 0"	77,000*	77,000*	48,700*	33,700*
	30	72.9	92' 7"	65,600*	64,800*	38,500*	26,200*
	35	69.5	90' 11"	54,800*	52,300*	31,600*	21,200*
	40	66.1	88' 11"	45,900*	42,300*	26,600*	17,600*
	50	58.9	83' 8"	35,900*	30,900*	19,800*	12,700*
	60	51.1	76' 8"	28,700*	23,700*	15,500*	9,600*
	70	42.4	67' 2"	23,600*	19,000*	12,400*	7,400*
	80	31.8	54' 0"	19,800*	15,500*	10,100*	5,700*
	90	16.0	31' 6"	16,900*	12,900*	8,300*	4,400*
100'	25	77.6	104' 4"	72,700*	72,700*	48,500*	33,500*
	30	74.6	103' 0"	65,400*	64,600*	38,400*	26,100*
	35	71.6	101' 6"	54,600*	52,200*	31,500*	21,100*
	40	68.6	99' 8"	46,700*	42,700*	26,500*	17,500*
	50	62.3	95' 1"	35,700*	30,800*	19,700*	12,600*
	60	55.6	89' 1"	28,500*	23,600*	15,300*	9,400*
	70	48.3	81' 4"	23,500*	18,900*	12,200*	7,200*
	80	40.1	71' 0"	19,700*	15,400*	10,000*	5,600*
	90	30.1	56' 10"	16,700*	12,800*	8,200*	4,300*
	100	15.2	32' 10"	14,400*	10,800*	6,800*	3,300*

BOOM				ON OUTRIGGERS		ON TIRES	
Length (Feet)	Radius (Feet)	Angle (Degree)	Point Height "W"	Rear	Side	Rear	Side
110'	25	78.7	114' 6"	68,000*	68,000*	48,400	33,400
	30	76.1	113' 5"	62,600*	62,600*	38,200	26,000
	35	73.4	112' 0"	54,400*	52,100*	31,300	20,900
	40	70.6	110' 5"	46,500*	42,600*	26,300	17,300
	50	65.0	106' 4"	35,500*	30,700*	19,500	12,400
	60	59.1	101' 0"	28,300*	23,500*	15,100	9,300
	70	52.8	94' 2"	23,300*	18,700*	12,100	7,100
	80	45.9	85' 7"	19,500*	15,300*	9,800	5,400
	90	38.2	74' 7"	16,500*	12,700*	8,000	4,200
	100	28.7	59' 5"	14,200*	10,700*	6,600	3,200
	110	14.5	34' 1"	12,200*	9,000*	5,500	2,300
120'	30	77.2	123' 7"	59,100*	59,100*	38,100	25,800
	35	74.8	122' 5"	54,200*	52,100*	31,200	20,800
	40	72.3	120' 11"	46,200*	42,500*	26,100	17,100
	50	67.2	117' 2"	35,300*	30,500*	19,300	12,200
	60	61.9	112' 6"	28,100*	23,400*	15,000	9,100
	70	56.3	106' 6"	23,000*	18,600*	11,900	6,900
	80	50.4	99' 1"	19,300*	15,100*	9,600	5,300
	90	43.9	89' 10"	16,300*	12,600*	7,900	4,000
	100	36.5	77' 11"	14,000*	10,500*	6,500	3,000
	110	27.4	61' 11"	12,100*	8,900*	5,300	2,200
	120'	13.9	35' 5"	10,500*	7,600*	4,400	1,500
130'	30	78.2	133' 11"	55,500*	55,500*	37,900	25,600
	35	76.0	132' 8"	51,100*	51,100*	31,000	20,600
	40	73.7	131' 5"	45,400*	42,400*	26,000	17,000
	50	69.0	128' 0"	35,100*	30,400*	19,200	12,100
	60	64.2	123' 8"	27,900*	23,200*	14,800	8,900
	70	59.2	118' 4"	22,800*	18,400*	11,700	6,700
	80	54.0	111' 8"	19,000*	15,000*	9,400	5,100
	90	48.3	103' 7"	16,100*	12,400*	7,700	3,800
	100	42.1	93' 8"	13,800*	10,400*	6,300	2,800
	110	35.0	81' 2"	11,900*	8,800*	5,200	2,000
	120	26.3	64' 4"	10,300*	7,400*	4,200	—
	130	13.3	36' 7"	8,900*	6,300*	3,400	—
	140'	30	79.1	144' 1"	52,100*	52,100*	37,700
35		77.0	143' 0"	47,400*	47,400*	30,800	20,400
40		74.9	141' 10"	42,700*	42,300*	25,800	16,800
50		70.7	138' 8"	34,700*	30,300*	19,000	11,500
60		66.2	134' 8"	27,900*	23,100*	14,600	8,700
70		61.7	129' 10"	22,600*	18,200*	11,500	6,500
80		56.9	123' 11"	18,800*	14,800*	9,200	4,900
90		51.8	116' 8"	15,900*	12,200*	7,500	3,600
100		46.4	108' 0"	13,600*	10,200*	6,100	2,600
110		40.5	97' 6"	11,700*	8,600*	5,000	1,800
120		33.7	84' 2"	10,100*	7,300*	4,000	—
130		25.4	66' 7"	8,700*	6,200*	3,200	—
140		12.8	37' 8"	7,400*	5,200*	2,500	—
150'		35	77.9	153' 4"	44,300*	44,300*	30,600
	40	75.9	152' 1"	39,700*	39,700*	25,600	16,600
	50	71.9	149' 2"	31,600*	30,100*	18,800	11,700
	60	67.9	145' 7"	25,900*	22,900*	14,400	8,500
	70	63.7	141' 1"	21,400*	18,100*	11,300	6,300
	80	59.3	135' 7"	16,800*	14,600*	9,000	4,700
	90	54.8	129' 2"	14,400*	12,100*	7,300	3,400
	100	50.0	121' 5"	12,200*	10,000*	5,900	2,400
	110	44.8	112' 2"	10,300*	8,400*	4,800	1,600
	120	39.0	101' 1"	8,800*	7,100*	3,800	—
	130	32.5	87' 2"	7,600*	6,000*	3,000	—
	140	24.5	68' 10"	6,500*	5,000*	2,400	—
	150	12.4	38' 10"	5,600*	4,200*	1,700	—

BOOM				ON OUTRIGGERS		ON TIRES	
Length (Feet)	Radius (Feet)	Angle (Degree)	Point Height "W"	Rear	Side	Rear	Side
160'	35	78.6	163' 6"	41,100*	41,100*	30,400	20,100
	40	76.8	162' 5"	36,900*	36,900*	25,400	16,400
	50	73.1	159' 8"	30,200*	30,100	18,600	11,500
	60	69.3	156' 4"	25,500*	22,700	14,200	8,300
	70	65.4	152' 1"	21,500*	17,900	11,100	6,100
	80	61.4	147' 1"	18,300*	14,500	8,800	4,500
	90	57.3	141' 2"	14,700*	11,900	7,100	3,200
	100	52.9	134' 2"	12,700*	9,900	5,700	2,200
	110	48.3	126' 0"	11,100*	8,200	4,600	—
	120	43.3	116' 4"	9,600*	6,900	3,600	—
	130	37.8	104' 7"	8,300*	5,800	2,800	—
	140	31.4	90' 1"	7,100*	4,900	2,200	—
	150	23.7	70' 11"	6,100*	4,100	—	—
160	12.0	39' 11"	5,200*	3,300	—	—	
170'	35	79.3	173' 8"	38,100*	38,100*	30,200	19,900
	40	77.6	172' 7"	34,200*	34,200*	25,200	16,200
	50	74.1	170' 1"	27,600*	27,600*	18,400	11,300
	60	70.6	166' 11"	23,600*	22,100	14,000	8,100
	70	67.0	163' 1"	20,000*	17,700	10,900	5,900
	80	63.3	158' 5"	15,700*	14,300	8,600	4,300
	90	59.4	153' 0"	13,600*	11,700	6,900	3,000
	100	55.4	146' 7"	11,700*	9,700	5,500	2,000
	110	51.2	139' 1"	10,200*	8,100	4,400	—
	120	46.7	130' 5"	8,900*	6,700	3,400	—
	130	41.9	120' 2"	7,900*	5,600	2,600	—
	140	36.6	107' 11"	6,900*	4,700	2,000	—
	150	30.5	92' 10"	5,900*	3,900	—	—
160	23.0	73' 0"	5,000*	3,200	—	—	
170	11.6	40' 11"	4,200*	2,500	—	—	
180'	40	78.3	182' 11"	31,100*	31,100*	25,000	16,000
	50	75.0	180' 6"	25,300*	25,300*	18,200	11,000
	60	71.7	177' 6"	21,500*	21,500*	13,800	7,900
	70	68.3	173' 11"	19,300*	17,500	10,700	5,700
	80	64.8	169' 6"	15,500*	14,100	8,400	4,100
	90	61.3	164' 6"	12,700*	11,500	6,700	2,800
	100	57.6	158' 7"	11,200*	9,500	5,300	1,800
	110	53.7	151' 8"	9,900*	7,900	4,200	—
	120	49.7	143' 10"	8,900*	6,500	3,200	—
	130	45.3	134' 8"	7,800*	5,400	2,400	—
	140	40.7	123' 11"	6,700*	4,500	1,800	—
	150	35.5	111' 2"	5,700*	3,700	—	—
	160	29.6	95' 6"	4,800*	3,000	—	—
170	22.3	75' 0"	4,000*	2,400	—	—	
180	11.3	41' 11"	3,300*	1,800	—	—	
190'	40	78.9	192' 11"	25,400*	25,400*	25,000	16,000
	50	75.8	190' 8"	23,100*	23,100*	18,100	11,000
	60	72.7	187' 10"	19,600*	19,600*	13,700	7,800
	70	69.5	184' 5"	15,700*	15,700*	10,600	5,600
	80	66.3	180' 5"	13,800*	13,800*	8,300	3,900
	90	62.9	175' 7"	12,200*	11,400	6,500	2,700
	100	59.5	170' 1"	10,800*	9,300	5,100	—
	110	55.9	163' 9"	9,400*	7,700	4,000	—
	120	52.2	156' 6"	8,500*	6,400	3,100	—
	130	48.3	148' 2"	7,500*	5,300	2,300	—
	140	44.1	138' 7"	6,400*	4,300	—	—
	150	39.6	127' 4"	5,400*	3,500	—	—
	160	34.5	114' 2"	4,600*	2,800	—	—
170	28.8	97' 11"	3,800*	2,200	—	—	
180	21.7	76' 9"	3,100*	—	—	—	
190	11.0	42' 9"	2,500*	—	—	—	
200'	40	79.5	203' 1"	21,300*	21,300*	21,300	15,800
	50	76.6	200' 11"	19,200*	19,200*	17,900	10,800
	60	73.6	198' 3"	16,200*	16,200*	13,500	7,600
	70	70.6	195' 0"	14,100*	14,100*	10,400	5,400
	80	67.5	191' 2"	12,100*	12,100*	8,100	3,700
	90	64.4	186' 9"	10,700*	10,700*	6,300	2,500
	100	61.2	181' 7"	9,500*	9,200	4,900	—
	110	57.8	175' 8"	8,500*	7,500	3,800	—
	120	54.4	169' 0"	7,400*	6,200	2,900	—
	130	50.8	161' 4"	6,600*	5,100	2,100	—
	140	47.0	152' 7"	6,000*	4,100	—	—
	150	42.9	142' 7"	5,200*	3,300	—	—
	160	38.5	130' 11"	4,300*	2,600	—	—
170	33.6	116' 5"	3,500*	2,000	—	—	
180	28.1	100' 6"	2,900*	—	—	—	
190	21.2	78' 8"	2,200*	—	—	—	
200	10.7	43' 8"	—	—	—	—	

BOOM				ON OUTRIGGERS		ON TIRES	
Length (Feet)	Radius (Feet)	Angle (Degree)	Point Height "W"	Rear	Side	Rear	Side
210'	40	80.0	213' 3"	19,400*	19,400*	19,400	15,600
	50	77.2	211' 2"	17,200*	17,200*	17,200	10,600
	60	74.4	208' 8"	14,400*	14,400*	13,300	7,400
	70	71.5	205' 7"	12,500*	12,500*	10,200	5,200
	80	68.6	202' 0"	10,800*	10,800*	7,900	3,500
	90	65.7	197' 9"	9,200*	9,200*	6,100	2,300
	100	62.6	192' 11"	8,100*	8,100*	4,700	—
	110	59.5	187' 5"	7,400*	7,300	3,600	—
	120	56.3	181' 2"	6,600*	6,000	2,600	—
	130	53.0	174' 0"	5,900*	4,900	—	—
	140	49.5	166' 0"	5,300*	3,900	—	—
	150	45.8	156' 10"	4,700*	3,100	—	—
	160	41.8	146' 5"	4,100*	2,400	—	—
170	37.5	134' 5"	3,300*	—	—	—	
180	32.8	120' 2"	2,600*	—	—	—	
190	27.4	102' 11"	2,000*	—	—	—	
200	20.7	80' 6"	—	—	—	—	
210	10.5	44' 7"	—	—	—	—	

Length (Feet)	Radius (Feet)	Angle (Degree)	Point Height "W"
50	77.8	227' 9"	—
60	75.1	225' 4"	—
70	72.4	222' 5"	—
80	69.7	219' 0"	—
90	66.8	215' 0"	—
100	64.0	210' 5"	—
110	61.0	205' 3"	—
120	58.0	199' 4"	—
130	54.9	192' 9"	—
140	51.7	185' 3"	—
150	48.2	176' 10"	—
160	44.7	167' 4"	—
170	40.8	156' 6"	—
180	36.7	144' 0"	—
190	32.0	129' 5"	—
200	26.7	111' 8"	—
210	20.2	88' 8"	—
220	10.2	51' 10"	—
50	78.3	238' 0"	—
60	75.8	235' 9"	—
70	73.2	232' 11"	—
80	70.6	229' 8"	—
90	67.9	225' 10"	—
100	65.2	221' 6"	—
110	62.4	216' 8"	—
120	59.6	211' 0"	—
130	56.6	204' 10"	—
140	53.6	197' 10"	—
150	50.4	190' 0"	—
160	47.1	181' 3"	—
170	43.6	171' 5"	—
180	39.9	160' 3"	—
190	35.8	147' 4"	—
200	31.3	132' 3"	—
210	26.1	114' 0"	—
220	19.7	90' 4"	—
230	10.0	52' 9"	—

Length (Feet)	Radius (Feet)	Angle (Degree)	Point Height "W"
50	78.8	248' 3"	—
60	76.4	246' 0"	—
70	73.9	243' 4"	—
80	71.4	240' 3"	—
90	68.9	236' 8"	—
100	66.3	232' 5"	—
110	63.7	227' 10"	—
120	61.0	222' 6"	—
130	58.2	216' 9"	—
140	55.3	210' 2"	—
150	52.4	202' 10"	—
160	49.3	194' 9"	—
170	46.1	185' 9"	—
180	42.7	175' 4"	—
190	39.0	163' 10"	—
200	35.0	150' 6"	—
210	30.6	135' 0"	—
220	25.6	116' 4"	—
230	19.3	92' 2"	—
240	9.8	53' 6"	—

We are constantly improving our products and therefore reserve the right to change designs and specifications. For certified dimensions consult the factory.

Lifting Crane Capacities

- Capacities shown are in pounds, and unless indicated by an asterisk (*), are based on 85% of minimum tipping loads with machine standing level on firm supporting surface. Deduction must be made for weight of hook block, hook, sling, spreader bar, and other suspended gear.
 - Asterisk indicates capacities are based on factors other than those which would cause a tipping condition.
- "On Tires" capacities — tire pressures to be 100 p.s.i.
- For lifting 164,000# with 3/4" rope, 10-parts of 3/4" Type "N" wire rope is required.
- For boom lengths 160' or longer, midpoint boom suspension pendants are required in conjunction with boom live mast to support center of boom at initial lift off ground.
- For lifting crane operation with all boom lengths, boom live mast must be fixed in pinned, extended (24' 0" long) position, and boom stops must be in proper working position.
- When using boom live mast as a short boom, maximum lifting capacity of boom live mast is 22,000#, with 3-parts of 3/4" Type "N" wire rope, from 10' minimum radius to 24' maximum radius. Boom live mast must be in pinned, extended (24' 0" long) position, boom live mast stops must be in proper working position, and carrier on outriggers.
- Main boom length, without jib, must not exceed 210'.
- Jib cannot be used on main boom longer than 180'.
- Boom lengths, radii, angles, and point height "W" dimensions furnished beyond where crane capacities are shown, represent combined boom and jib lengths (with jib mounted "in-line" with boom). These are to be used only for determining jib capacities



Link-Belt Speeder

DIVISION OF FMC CORPORATION



Cedar Rapids, Iowa • Woodstock, Ontario, Canada • Queretaro, Mexico • Milan, Italy

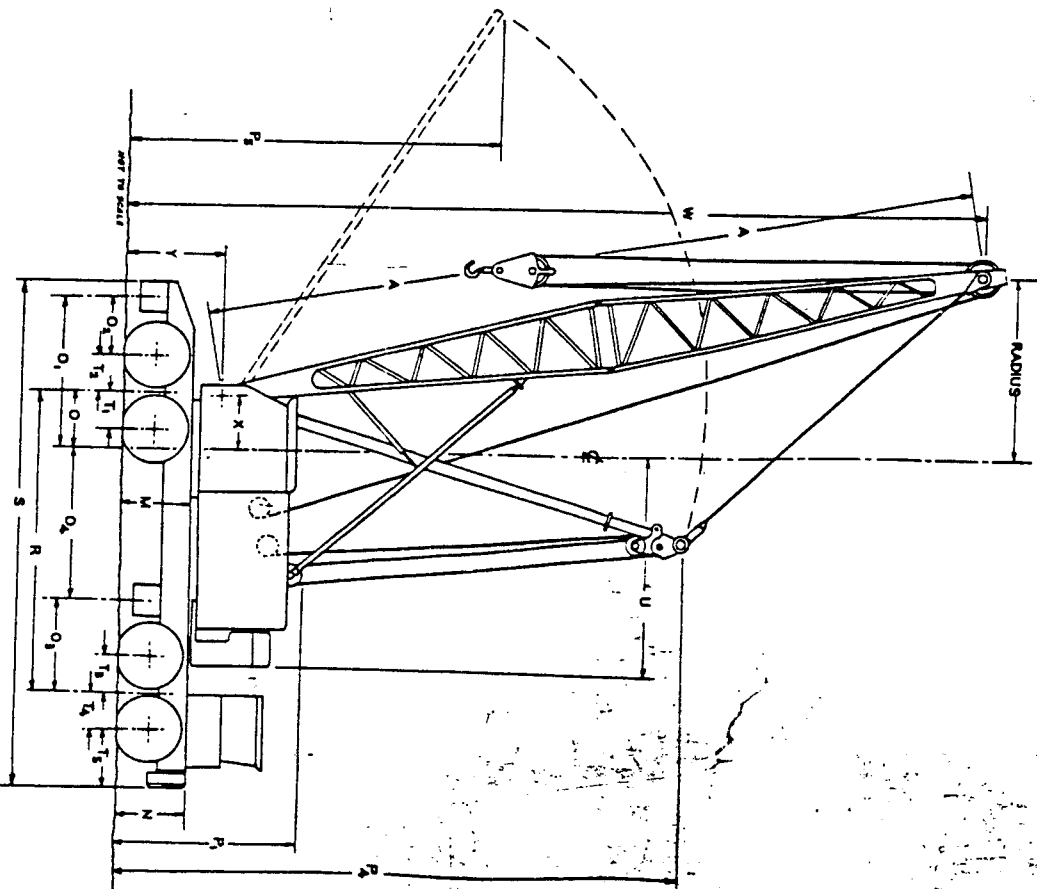
Courtesy of CraneMarket

DIMENSIONS AND WORKING RANGES

Carrier — 8 x 4, 11' 0" Wide

Basic boom length	Carrier — 8 x 4, 11' 0" Wide
Overall height, top of turntable bearing plate	A 40' 0"
Ground clearance under counterweight	M 4' 8"
Centerline rotation to rear axle bogie pivot	N 4' 11"
Centerline rotation to center rear outrigger	O 3' 8"
Center rear rear axle to center rear outrigger	O ₁ 10' 0"
Center front axle bogie to center front outrigger	O ₂ 3' 11"
Centerline rotation to center front outrigger	O ₃ 6' 0"
Overall height, boomhoist bail sheave	O ₄ 10' 0"
Height, over vertical extended boom live mast	P ₁ 11' 6"
Height, over extended boom live mast with basic 40' boom horizontal over rear of carrier	P ₂ 31' 5"
Minimum ground clearance under carrier	P ₃ 17' 0"
Wheelbase (236")	Q 0' 11"
Overall length over rear outrigger box — with front bumper counterweight	R 19' 8"
Center rear axles to pivot of rear bogie	S 33' 4"
Center front axles to pivot of front bogie	S 32' 9"
Center front front axle to front bumper	T ₁ & T ₂ 2' 5"
Center front front axle to front bumper ctwt.	T ₃ & T ₄ 2' 5"
Tailswing of counterweight	T ₅ 3' 4"
Radius of boom hinge pin	T ₆ 14' 11"
Height of boom hinge pin	U 3' 6"
Overall height, basic 40' boom in travel position with boom live mast retracted and linked to boom — boom over front end of carrier (boom 1" above boom guide)	V 6' 7"
Overall length*, basic 40' boom in travel position with boom live mast retracted and linked to boom — boom over front end of carrier (boom 1" above boom guide)	Y 14' 6 1/2"
Overall width outriggers retracted (floats removed)	11' 6"
Overall width, outriggers extended (over jacks)	60' 5"
Center rear rear axle to center front front axle	67' 9"
Center front rear axle to center rear front axle	11' 0"
Centers rear tandem axles	20' 0"
Centers front tandem axles	20' 11"
Overall cab width	24' 6"
	14' 10"
	4' 10"
	4' 10"
	10' 6"

*Overall length is figured without bumper counterweight.



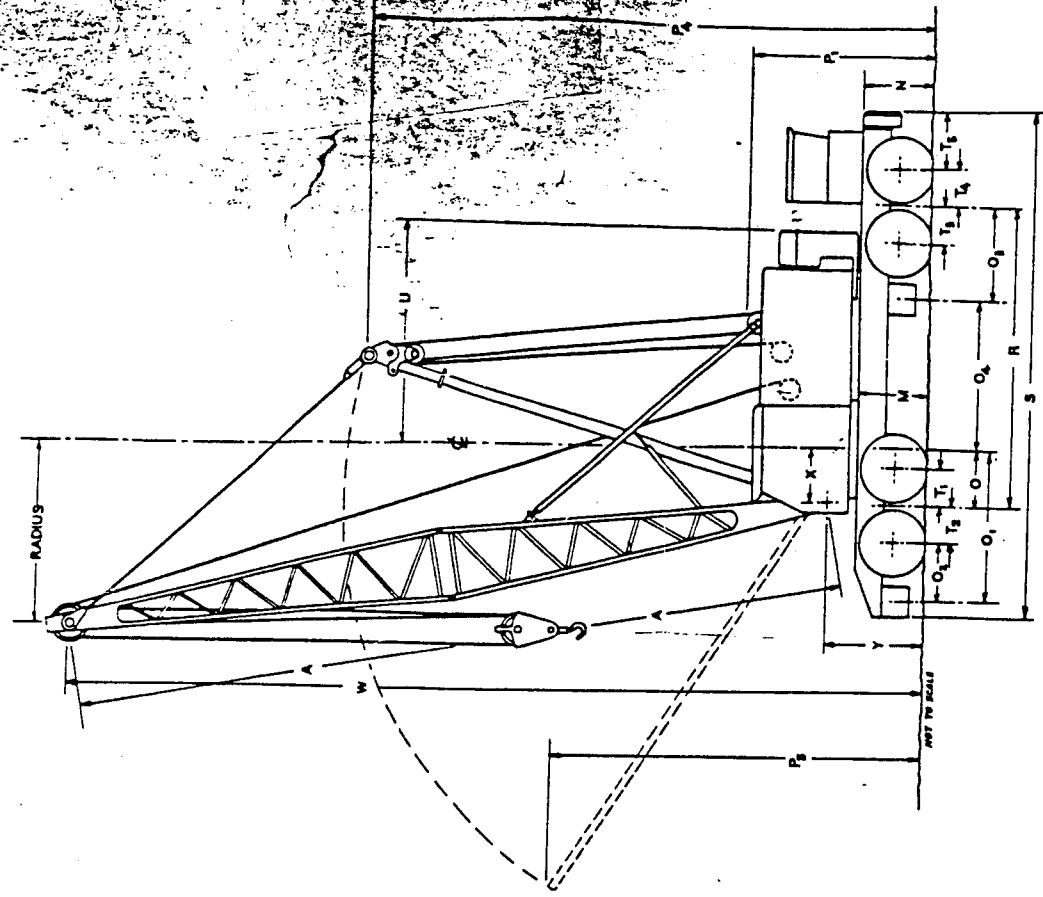
This machine as manufactured conforms with the requirements of: ANSI B30.5-1968 and, when equipped with suitable load and angle indicating devices, conform with THE DEPARTMENT OF LABOR SAFETY AND HEALTH REGULATIONS as listed in the...

DIMENSIONS AND WORKING RANGES

Carrier — 8 x 4, 11' 0" Wide

Basic boom length	40' 0"	A
Overall height, top of turntable bearing plate	4' 8"	M
Ground clearance under counterweight	4' 11"	N
Centerline rotation to rear axle bogie pivot	3' 8"	O
Centerline rotation to center rear outrigger	10' 0"	O ₁
Center rear axle to center rear outrigger	3' 11"	O ₂
Center front axle bogie to center front outrigger	6' 0"	O ₃
Centerline rotation to center front outrigger	10' 0"	O ₄
Overall height, boomhoist bail sheave	11' 6"	P ₁
Height, over vertical extended boom live mast	31' 5"	P ₄
Height, over extended boom live mast with basic 40' boom horizontal over rear of carrier	—	P ₅
Minimum ground clearance under carrier	17' 0"	Q
Wheelbase (236')	0' 11"	R
Overall length over rear outrigger box — with front bumper counterweight	19' 8"	S
without front bumper counterweight	33' 4"	S
Center rear axles to pivot of rear bogie	32' 9"	S & T ₂
Center front axles to pivot of front bogie	2' 5"	T ₃ & T ₄
Center front front axle to front bumper	2' 5"	T ₅
Center front front axle to front bumper clwt.	3' 4"	T ₅
Tailswing of counterweight	3' 11"	U
Radius of boom hinge pin	14' 0"	X
Height of boom hinge pin	3' 6"	Y
Overall height, basic 40' boom in travel position with boom live mast retracted and linked to boom — Boom over front end of carrier (boom 1" above boom guide)	6' 7"	—
Boom over rear end of carrier (boom horizontal)	14' 6 1/2"	—
Overall length*, basic 40' boom in travel position with boom live mast retracted and linked to boom — Boom over front end of carrier (boom 1" above boom guide)	11' 6"	—
Boom over rear end of carrier (boom horizontal)	60' 5"	—
Overall width outriggers retracted (floats removed)	67' 9"	—
Width, outriggers extended (C/L to C/L of jacks)	11' 0"	—
Overall width, outriggers extended (over jacks)	20' 0"	—
Center rear axle to center front front axle	20' 11"	—
Center front rear axle to center rear front axle	24' 6"	—
Centers rear tandem axles	14' 10"	T ₁ + T ₂
Centers front tandem axles	4' 10"	T ₃ + T ₄
Overall cab width	4' 10"	—
	10' 6"	—

*Overall length is figured without bumper counterweight.



This machine as manufactured conforms with the requirements of: ANSI B30.5-1968 and, when equipped with suitable load and angle indicating devices, conforms with THE DEPARTMENT OF LABOR SAFETY AND HEALTH REGULATIONS.

HC-218 MAXIMUM JIB CAPACITIES — Machine equipped with Hi-Lite tubular boom with open throat top section and tubular jib.

JIB ANGLE TO GROUND	JIB LENGTH		
	30'	45'	60'
80°	24,000#	17,000#	14,000#
65°	17,000#	13,000#	10,000#
50°	13,000#	8,000#	6,000#
35°	11,500#	7,000#	5,000#
20°	10,000#	5,000#	3,000#

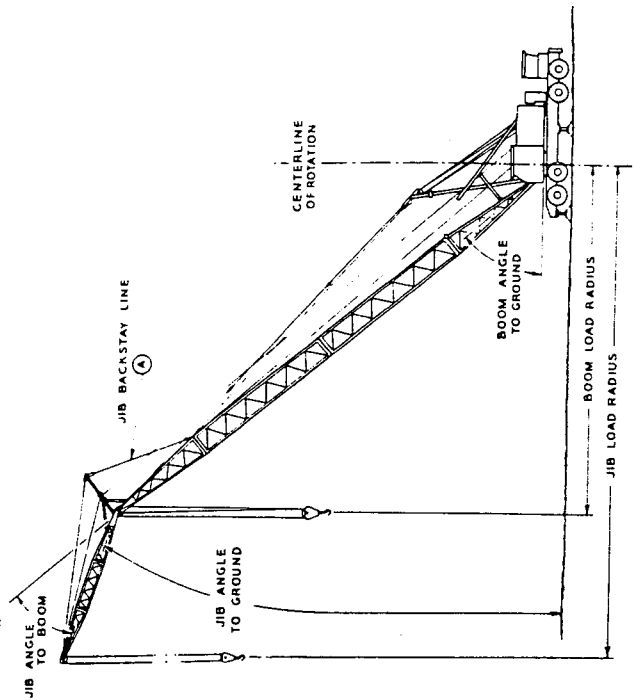
1. Capacities shown are in pounds and are based on a Link-Belt Speeder tubular jib 32" wide and 24" deep and used with a 12' 1" high jib mast in proper working position.

2. Note lifting crane capacity chart. Boom radius and angle dimensions have been extended to include maximum boom/jib length combinations for use in determining jib radius and angle to ground when jib is mounted "in-line" (zero degree offset from boom), with boom. When jib is mounted at 15° or 30° offset from boom, to determine jib angle to ground, deduct jib angle to boom from the boom angle to ground.

3. Jib angle to boom must not exceed 30°.

4. Determining jib capacities —

- Add length of boom plus length of jib used.
- Determine jib load radius — refer to step 2.
- Refer to lifting crane capacity chart and select the boom length that corresponds to the total length of boom and jib in (4-a) and the radius in (4-b) — not to exceed 180' boom.
 - Jib capacity is equal to the equivalent lifting crane capacity unless restricted by the maximum jib capacities shown in the above chart.



d. If total length boom and jib exceeds 180' boom length listed in the lifting crane capacity chart, deduct 100 lbs. from the capacity shown for the 180' boom length for the radius required in (4-b).

- Jib capacity is the resulting figure unless restricted by the maximum jib capacities shown in the above chart.

5. Boom live mast is required for all boom lengths.

6. Determining lifting crane capacities with jib mounted on boom —

- When handling loads off the main boompoint sheaves, with a jib on the boom, the following reductions in machine lifting capacities must be made:
 - 30' jib — deduct 2,000 lbs.
 - 45' jib — deduct 2,400 lbs.
 - 60' jib — deduct 3,200 lbs.

7. Jib cannot be used on boom longer than 180'.